



Black Print, With CMY Empty

Machines included:

HL-4040CN	✓
HL-4050CDN	✓
HL-4070CDW	✓
DCP-9040CN	✓
DCP-9045CDN	✓
MFC-9440CN	✓
MFC-9840CDW	✓

Contents

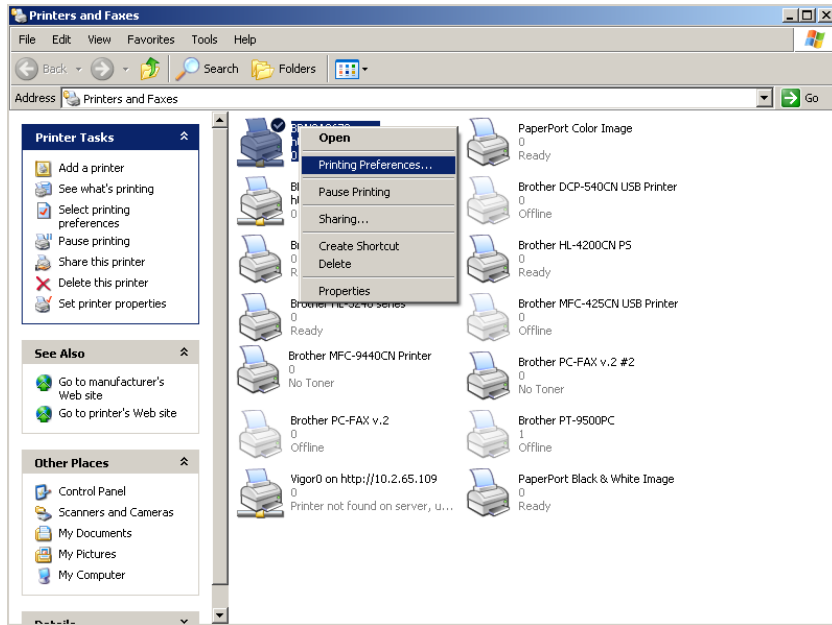
- 1) Overview
- 2) How to Configure (In two easy steps)

1: Basic Overview

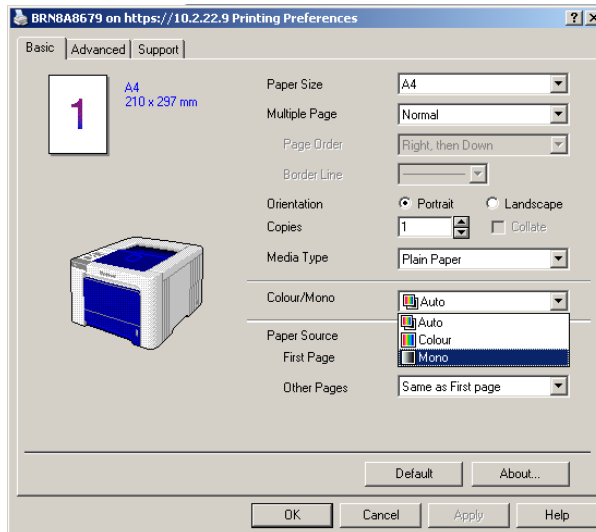
Brother's range of colour laser network machines are now capable of printing in mono when any, or even all, of the colour toners have run out. This can be beneficial to any customer who mainly prints in black or who needs to print a document urgently without having to replace empty colour toners.

2: How to configure

Step 1: Right click the Brother machine and left click 'Printing Preferences...'



Step 2: Select 'Mono' within the printer driver then click 'Apply'



You can now print in mono¹.

¹ The empty toner cartridge must still be installed in the machine to print in mono. It is removed, this feature will not work.