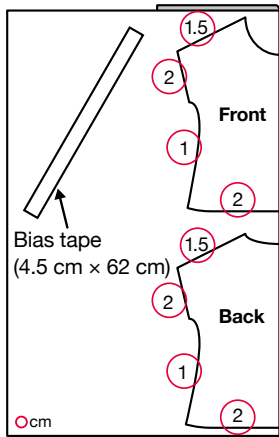


# French-sleeve T-shirt

1. If there are no instructions to use a specific stitch, use the straight stitch.
2. Presser foot "J" (straight stitch/zigzag stitch) and overcasting foot "G" will be used.



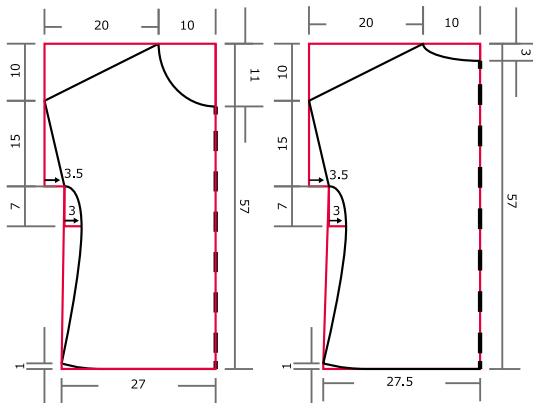
## Materials

- Jersey fabric (110 cm wide x 125 cm)  
Use fabric that does not have edges that roll up when it is cut.
- Machine thread for knit fabrics

Cut while adding the seam allowances indicated in  $\bigcirc$ .  
There is no seam allowance at the neckline.

Bust size: 75 to 85 cm

First, draw and prepare paper patterns, as shown below.



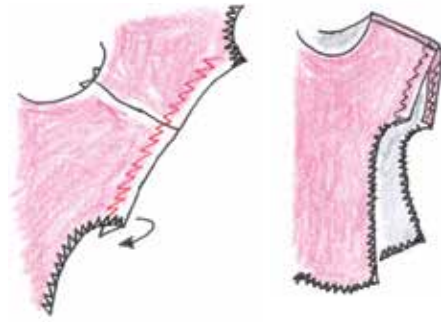
- 1 Sew overcast stitching along the body of the front and back.

Sew overcast stitching along the shoulders, sleeves and hem.

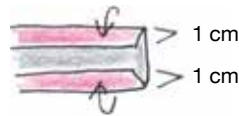


- 2 With their right sides together, sew together the front and back along the shoulders.  
Seam allowance: 1.5 cm

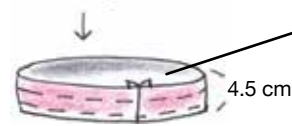
- 3 Fold over the sleeve hem, and then sew with an elastic zigzag stitch.



- 4 Form a ring with the bias tape, and then sew it to the neckline.



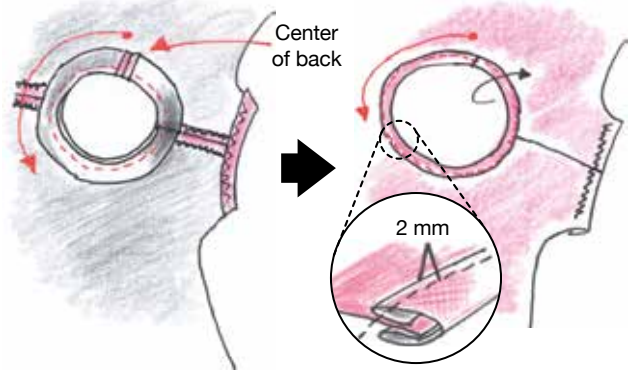
Fold over both edges and iron, and then open again. Sew together both ends to form a ring.



Form a ring with a 1 cm seam allowance.

Starting from the center of the back, sew 1 cm from the edge.

Fold the bias tape to the right side, and then sew one line of stitching along the edge.



- 5 With their right sides together, sew along the sides.



- 6 Fold over the hem, and then sew with an elastic zigzag stitch.



Done!