

Printer Sharing of the PT-9500pc in a Windows Environment

This procedure is for configuring the PT-9500pc as a shared printer in Microsoft Windows.

For printer sharing to operate correctly, please be sure that::

The network is properly set up, and

The user access permissions for each computer are set appropriately.

Please Note: Brother does not provide support for problems that may result from misconfigured network or user settings. For details on the appropriate settings, consult your network administrator or refer to the Windows manual for help.

Sharing settings for Windows 2000, Windows XP Professional, and Windows XP Home

[Connecting the P-touch and specifying computer sharing](#)

[Specifying client computer settings](#)

Sharing settings for Windows 98SE

[Connecting the P-touch and specifying computer sharing](#)

[Specifying client computer settings](#)

[Other information](#)

Sharing settings for Windows 2000, Windows XP Professional, and Windows XP Home Edition

<Windows XP should be used with Service Pack 1 or later.>

<The Windows Server operating system is incompatible.>

Connecting the PT-9500pc and specifying computer sharing

Install the PT-9500pc printer driver.

For details on the installation procedure, refer to the PT-9500pc manual.

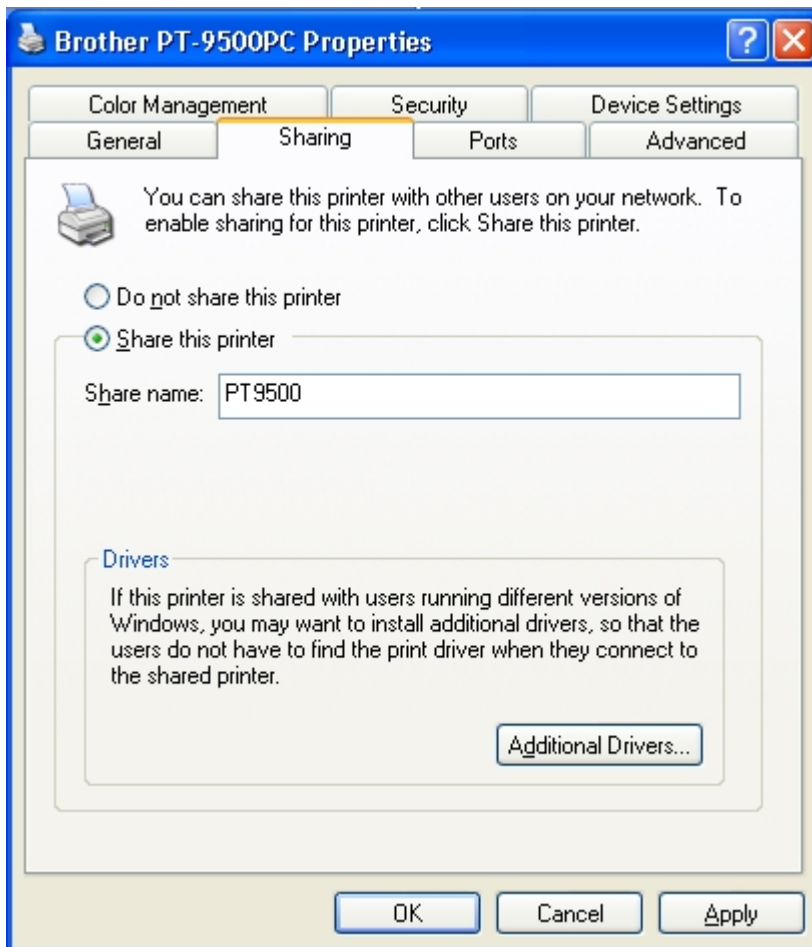
Specify printer sharing settings.

Open the Printers (or Printers and Faxes) folder.

Right-click the printer icon for PT-9500pc, and then click "Sharing..." in the menu.

In the Properties dialog box, select the "Share this printer" check box.

In the "Share name" box, type in a name that can easily be recognized on the network. ("PT9500" for this example)



Note: Brother recommends that you do not register other versions of the Windows driver in the Additional Drivers dialog box. Instead, install the required drivers on each client computer.

Also make sure to install P-touch Editor on each client computer that will be printing to the PT-9500pc. You can refer to the PT-9500pc software manual for further information on installing the P-touch Editor software.

Specifying client computer settings
(Windows XP Pro / XP Home / 2000)

Install the PT-9500pc printer driver.

For details on the installation procedure, refer to the PT-9500pc software manual for the software.

Tip!

Completing installation of the driver without connecting the PT-9500pc

In the dialog box that appears after starting up the CD-ROM included with the PT-9500pc, select "Advanced setup".

Click the button for the printer driver.

Select "Network Connection" as the connection method, and then install the driver.

A driver with a "FILE:" port is created.

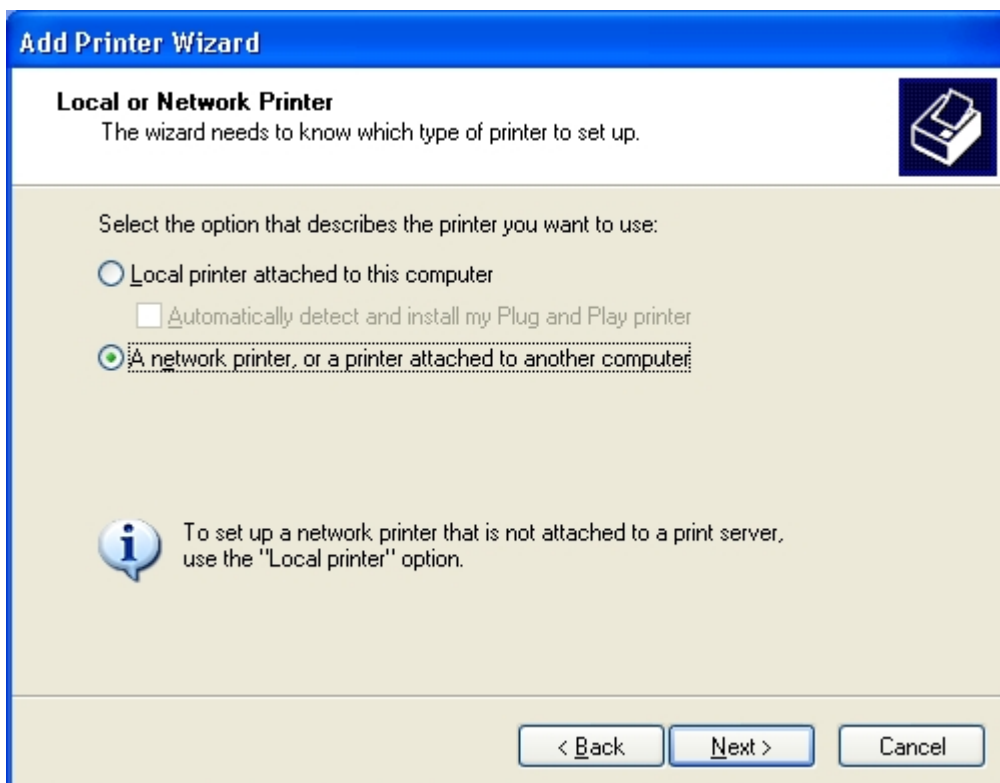
To connect to the shared computer:

Open the Printers (or Printers and Faxes) folder.

Double-click the Add printer icon or click "Add printer" in the "File" menu to start up the Add Printer Wizard.

In the first Add Printer Wizard dialog box, click the Next button to continue.

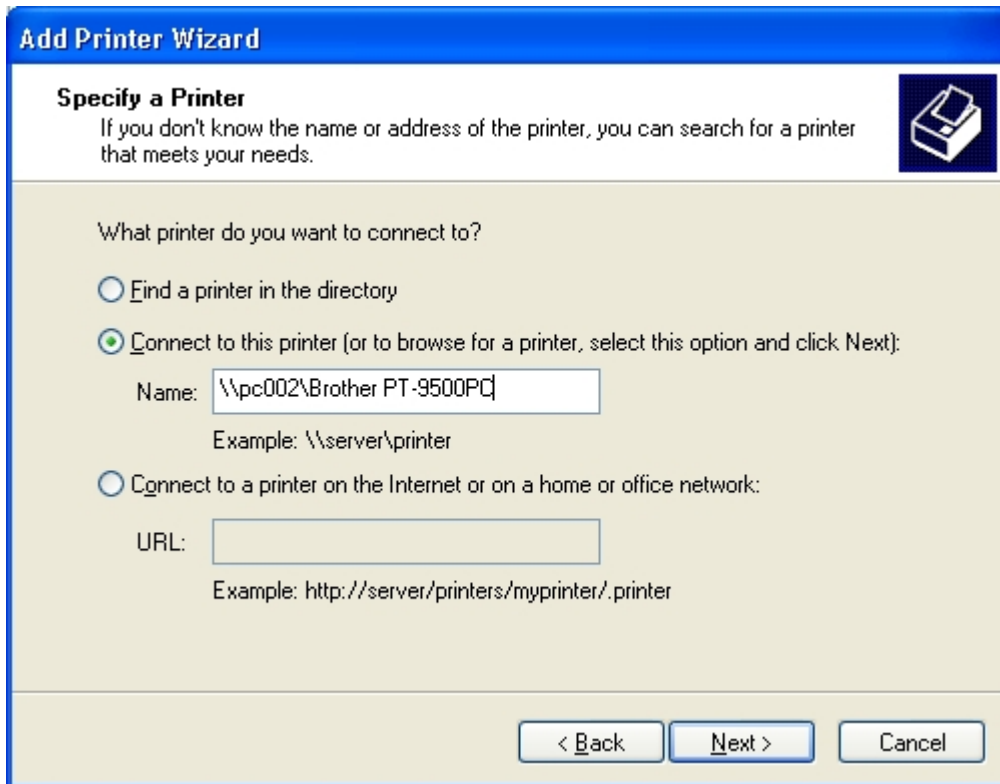
Select "A network printer, or a printer attached to another computer", and then click the Next button.



Type “[\\server_name\printer_name](#)”, and then click the Next button.

OR

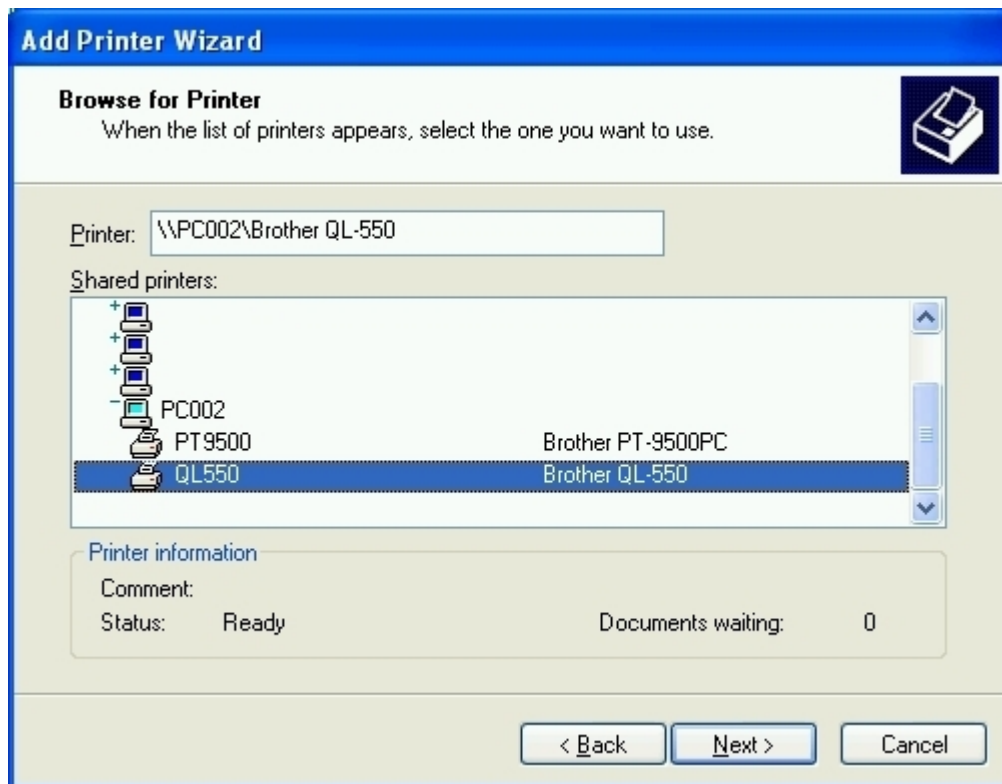
Without typing in the printer name, click the Next button to select from a list of printers.



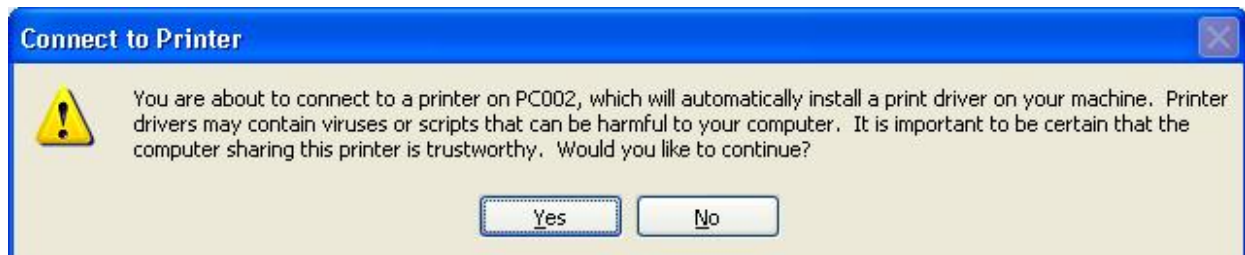
The screenshot shows the 'Add Printer Wizard' dialog box with the title 'Add Printer Wizard' and a printer icon. The main heading is 'Specify a Printer' with the instruction: 'If you don't know the name or address of the printer, you can search for a printer that meets your needs.' Below this, the question 'What printer do you want to connect to?' is followed by three radio button options: 'Find a printer in the directory', 'Connect to this printer (or to browse for a printer, select this option and click Next):', and 'Connect to a printer on the Internet or on a home or office network:'. The second option is selected. Under the second option, there is a text box containing '\\pc002\Brother PT-9500PC' and an example '\\server\printer'. Under the third option, there is a text box for 'URL:' and an example 'http://server/printers/myprinter/.printer'. At the bottom, there are three buttons: '< Back', 'Next >', and 'Cancel'.

Select the shared printer (“Brother PT-9500PC” for this example), and then click the Next button.

If the printer to be shared does not appear in this list, check that the network settings, user settings, and printer sharing settings are correctly specified.

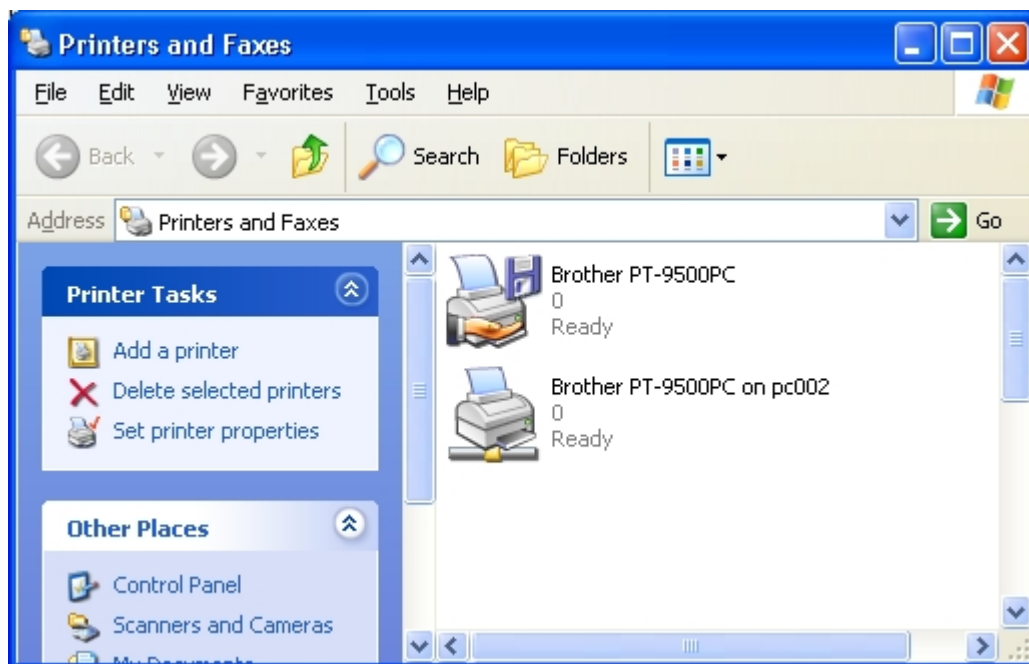


In Windows XP, the following message may appear. If there are no problems with the computer sharing the printer, click the Yes button.



In the screen for specifying the default printer, select "No", and then click the Next button.

In the final dialog box, click the Finish button to finish specifying settings.

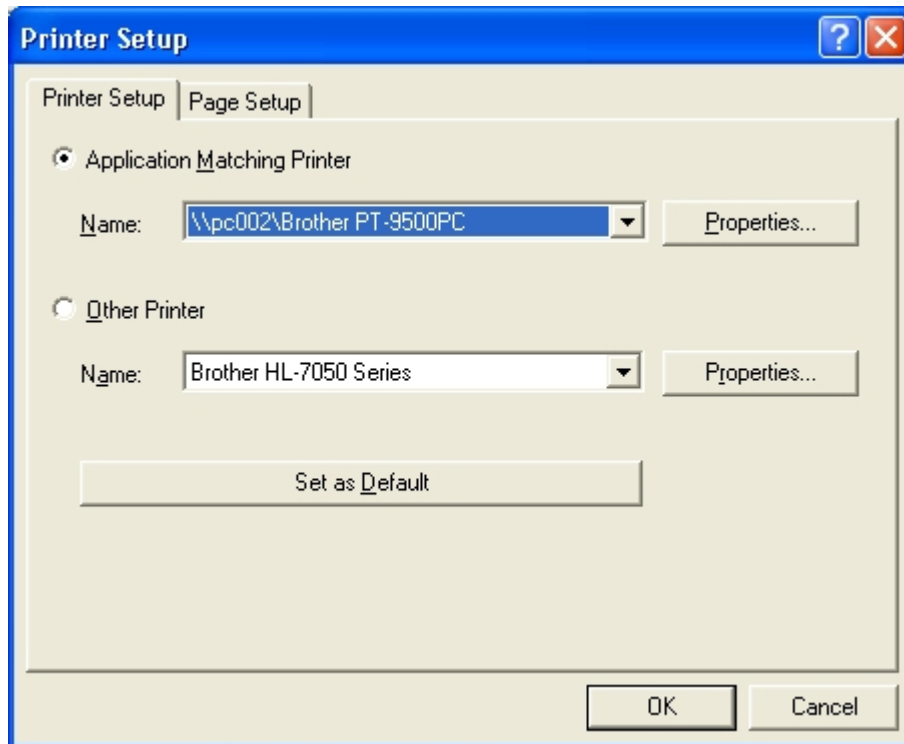


The shared printer is Brother PT-9500PC on pc002.

To select the shared printer in P-touch Editor:

Click "Printer Setup" in the "File" menu of P-touch Editor to display the Printer Setup dialog box.

From the list below "Application Matching Printer", select the shared printer PT-9500pc, and then click the Set as Default button to set the printer as the default printer.



If the shared printer PT-9500pc is in the list below "Other Printer", installation of the printer driver failed. Try installing the printer again from the beginning.

Sharing settings for Windows 98SE

Connecting the PT-9500pc and specifying computer sharing

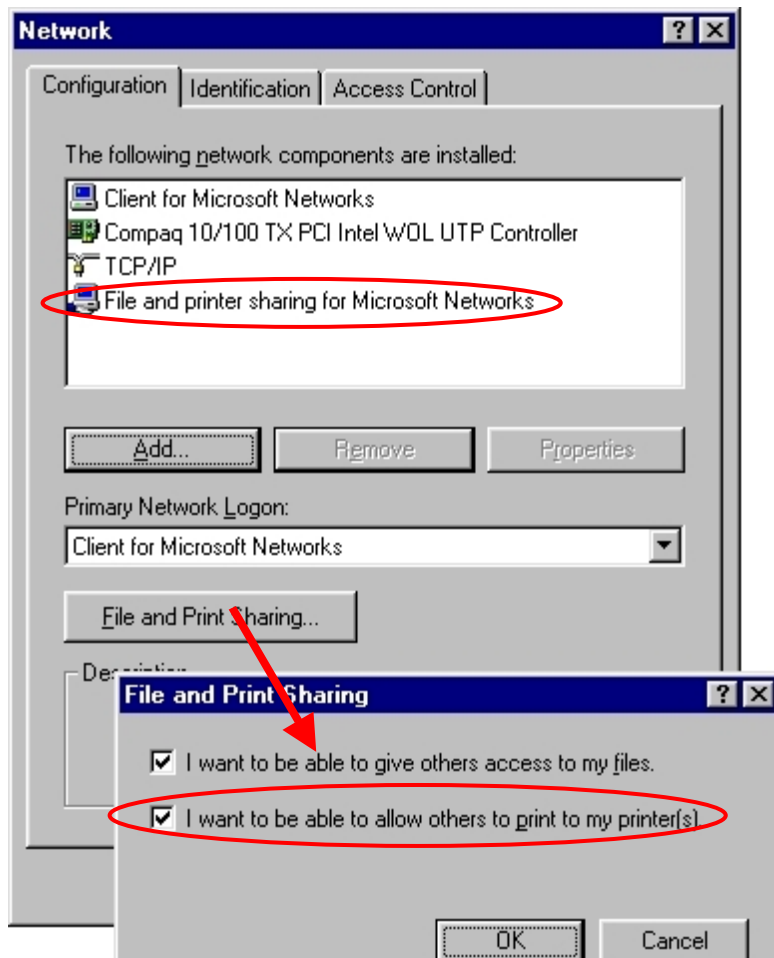
Check that the computer running Windows is set for printer sharing.

From Control Panel, display the Network dialog box.

Check the following:

Is “File and printer sharing for Microsoft Networks” installed?

Is the “I want to be able to allow others to print to my printer(s)” check box selected?



Install the PT-9500pc printer driver.

For details on the installation procedure, refer to the PT-9500pc manual.

Specify printer sharing settings.

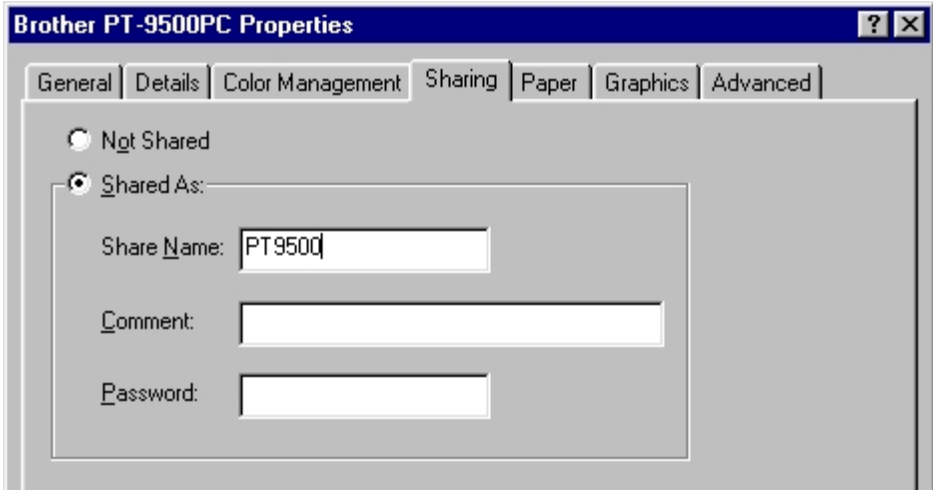
Open the Printers folder in Control Panel.

Right-click the printer icon for PT-9500pc, and then click “Properties” in the menu that appeared.

Click the Sharing tab in the Properties dialog box, and then select “Shared As”.

In the “Share Name” box, type in a name that can easily be recognized on the network.

(“PT9500” for this example).



Specifying client computer settings <Windows 98SE>

Install the 9500pc printer driver.

For details on the installation procedure, refer to the PT-9500pc manual.

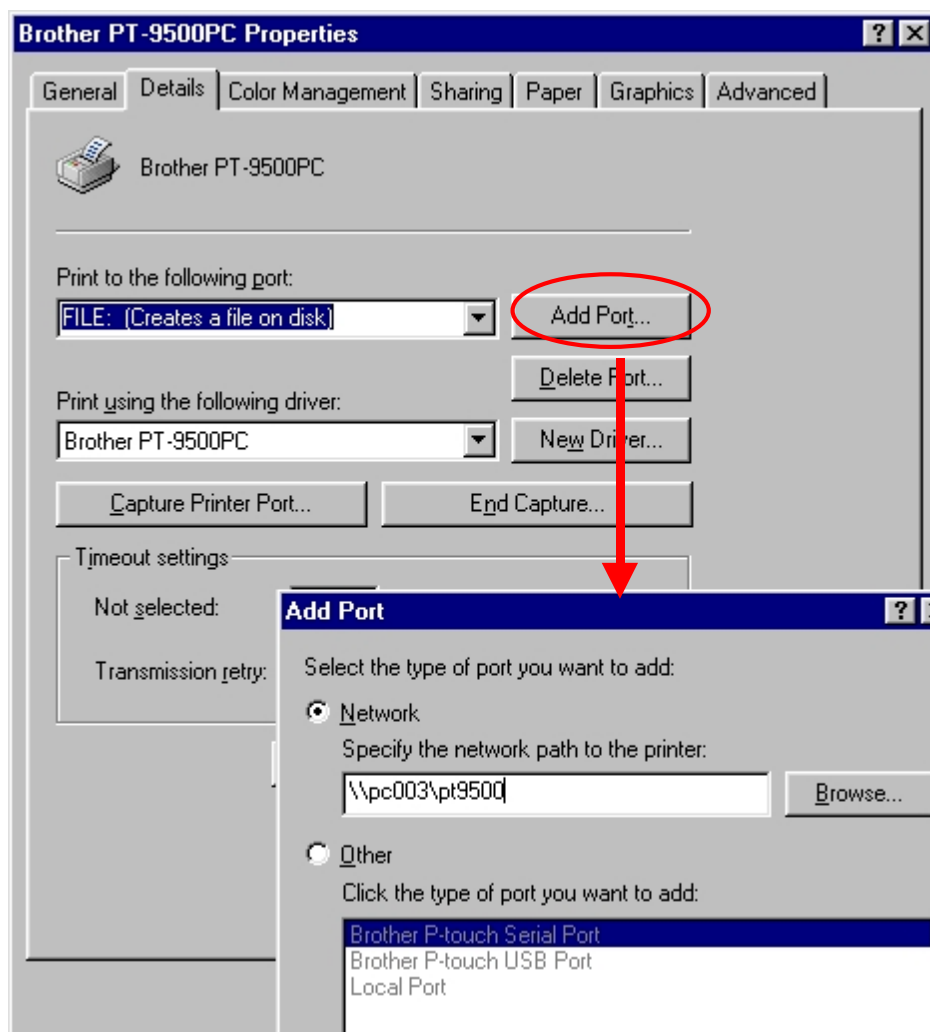
Change the printer port to a network path.

From the Printers folder, display the Properties dialog box for PT-9500pc.

Click the Details tab, and then click the Add Port button to display the Add Port dialog box.

Type "\\server_name\printer_name" as the network path to the printer.

The printer can be searched for by clicking the Browse button.



<Other information>

Print monitor window

The print monitor window appears on the computer that is connected to the PT-9500pc. Therefore, errors, such as for an incorrect tape width, appear on the display of the computer connected to the PT-9500pc, instead of on the client computer.

To hide the print monitor window from the display of the computer connected to the PT-9500pc
[Setting procedure]

Connect the PT-9500pc, and then display the Properties dialog box for PT-9500pc from the Printers folder of the computer set to be shared.

Click the Device Settings tab, and then set "Monitor Size" to "Icon".

With this setting, the print monitor window appears only when an error occurs and does not appear during normal printing.

(Change the setting on a shared computer when the print monitor window is in the way.)

Rights for installing the P-touch Editor software on multiple computers

The user may install copies of this software on one or more computers (at the user's place of business) only for the purpose of printing from P-touch to a Brother P-touch or QL printer.

By installing P-touch Editor version 4.0, you indicate your acceptance of the License Agreement provided below.

1. Grant of License.

Brother grants you the following license:

- 1) To install one copy of the SOFTWARE on your single computer hardware and use, display and execute the same: provided, however, that if the SOFTWARE is packaged with Brother hardware products or constitutes any version-ups of a software that has been packaged with Brother hardware products, you may install the SOFTWARE on your multiple computer hardware and use the same inside of your single location for the sole purpose of output with such Brother hardware products.

- 2) To make only one copy of the SOFTWARE solely for archival purposes: provided that such copy shall include any and all copyright notices and/or other notices relating to rights to any intellectual property in the original SOFTWARE in form totally identical with those in such original SOFTWARE.