

Product Safety Guide

MFC-J3660DW/MFC-J3960DW

Read this guide before attempting to operate the product, or before attempting any maintenance, and ensure that you follow all warnings and instructions marked on the product. Brother shall not be liable for the damage caused where the product owner has failed to follow the instructions set out in this guide or on the product.

For more detailed instructions, information, and product specifications, see the *Online User's Guide* at support.brother.com/manuals.

Symbols and Conventions Used in the Documentation

The following symbols and conventions are used throughout the documentation.

WARNING

WARNING indicates a potentially hazardous situation which, if not avoided, could result in death or serious injuries.

CAUTION

CAUTION indicates a potentially hazardous situation which, if not avoided, may result in minor or moderate injuries.

IMPORTANT

IMPORTANT indicates a potentially hazardous situation which, if not avoided, may result in damage to property or loss of product functionality.

- Prohibition icons indicate actions that must not be performed.
- This icon indicates that flammable sprays must not be used.
- This icon indicates that organic solvents/liquids such as alcohol must not be used.
- Electrical Hazard icons alert you to the possibility of an electric shock.
- Fire Hazard icons alert you to the possibility of a fire.
- Explosion Hazard icons alert you to the possibility of an explosion.
- This icon alerts you to the possibility of being injured by moving parts.
- This icon alerts you to the areas that contain moving parts.

Bold Bold typeface identifies specific buttons on the product's control panel or on the computer screen.

Italics Italicised style emphasises an important point or refers you to a related topic.

Courier New Text in Courier New font identifies messages on the LCD of the product.

Compilation and Publication Notice

In this guide, the illustrations of the following model is used unless otherwise specified:
MFC-J3960DW

These machines are approved for use in the country of purchase only. Local Brother companies or their dealers may only support machines purchased in their own countries.

This product's manuals have been compiled and published to provide the latest product safety information at the time of publication. The information contained in these manuals may be subject to change.

For the latest manuals, visit support.brother.com.

©2025 Brother Industries, Ltd. All rights reserved.

Choose a Safe Location for Your Product

WARNING

- Choose a location where the temperature remains between 10°C and 35°C, the humidity is between 20% and 80%, and where there is no condensation.
- DO NOT expose the product to direct sunlight, excessive heat, open flames, corrosive gasses, moisture, or dust.
- DO NOT place the product near chemicals or in a place where chemicals could be spilled on it. In particular, organic solvents or liquids such as benzene, paint thinner, polish remover, or deodoriser may melt or dissolve the plastic cover and/or cables. These or other chemicals may cause the product to malfunction or become discoloured.

Do not install or use in areas where explosive or electrically conductive dusts are generated.

Make sure you place this product on a stable and level surface free from vibration and shocks. The product is heavy and may fall, causing injury to you or others and serious damage to the product.

CAUTION




- Install the product near a telephone socket (models with the fax function only) and a standard grounded electrical socket.
- Install the product in a safe location where it cannot be accidentally knocked over.
- Ensure that cables and cords are secured so as not to pose a tripping hazard.
- DO NOT place heavy objects on the product.
- DO NOT place any objects around the product that may block access to the electrical socket. It is important that the product can be unplugged whenever needed.

IMPORTANT

- DO NOT place your product next to devices that contain magnets or generate magnetic fields. Doing so may interfere with the operation of the product, causing print quality problems.
- DO NOT tilt the product if the ink cartridges are installed, to avoid ink spillage and internal damage to the product.
- DO NOT place your product next to sources of interference, such as speakers or the base units of cordless telephones. Doing so may interfere with the operation of the product's electronic components.
- DO NOT place anything in front of the product that will block printed pages or received faxes (models with the fax function only).



Connect the Product Safely

⚠ WARNING


	<ul style="list-style-type: none"> • There are high-voltage electrodes inside the product. Before cleaning or other routine maintenance of your product, disconnect the telephone line cord first, and then unplug the power cord and disconnect all other cables. • Always make sure the plug is fully inserted. DO NOT use the product if the power cord has become worn or frayed. • DO NOT drop any metal objects or any type of liquid on the product's power plug. • Connect this product to an AC power source within the range shown on your machine's rating label. DO NOT connect it to a DC power source, inverter or UPS (uninterruptible power supply). If you are not sure what kind of power source you have, contact a qualified electrician.
	<p>DO NOT handle the plug with wet hands.</p>
	<p>To prevent the accumulation of dust, unplug the power plug regularly to clean it. Use a dry cloth to clean the base of the plug pins and between the pins.</p>


Use the Product Safely

⚠ WARNING

	<ul style="list-style-type: none"> • DO NOT dismantle this product. • DO NOT attempt to service this product yourself. Opening or removing covers may expose you to dangerous voltage points and other risks and may void your warranty. Refer all servicing to Brother customer service or your local Brother dealer. • If the product has been dropped or the casing has been damaged, there may be the possibility of an electric shock. Unplug the product from the electric socket and contact Brother customer service or your local Brother dealer. • If water, other liquids, or metal objects get inside the product, immediately unplug the product from the electrical socket and contact Brother customer service or your local Brother dealer. • If the product becomes unusually hot, releases smoke, or generates any strong smells, immediately unplug the product from the electrical socket. Contact Brother customer service or your local Brother dealer.
	<p>Power Cord Safety</p> <ul style="list-style-type: none"> • This product is equipped with an earthed plug. This plug will only fit into an earthed electrical socket. This is a safety feature. If you are unable to insert the plug into the socket, ask your electrician to replace your obsolete socket.

- DO NOT allow anything to rest on the power cord.
- DO NOT place this product where others might step on the cord.
- DO NOT place this product in a position where the cord is stretched as it may become worn or frayed.
- DO NOT use the product or handle the cord if the cord has become worn or frayed. If unplugging your product, DO NOT touch the damaged/frayed part.
- DO NOT pull on the middle of the power cord; pulling on the middle may cause the cord to separate from the plug.
- DO NOT use unsupported hardware. Cables must meet the cable specifications described in the *Specifications* chapter of the *Online User's Guide*.
- Brother strongly recommends that you DO NOT use any type of extension cord.
- If the power cord is provided with this product, use ONLY the provided cord. Installation must be performed correctly as described in the *Quick Setup Guide*.

	<ul style="list-style-type: none"> • DO NOT use or install this product during a thunderstorm. • (Models with the fax function only) Use caution when installing or modifying telephone lines. Never touch telephone wires or terminals that are not insulated unless the telephone line has been unplugged from the wall socket. Never install a telephone wall socket in a location that is wet or may become wet.
---	--

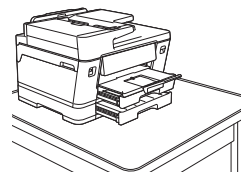
	<p>DO NOT use flammable substances, any type of spray, or an organic solvent/liquid containing alcohol or ammonia to clean the inside or outside of the product. Instead, use only a dry, lint-free cloth. For instructions on how to clean the product, see the <i>Online User's Guide</i>.</p>
---	--

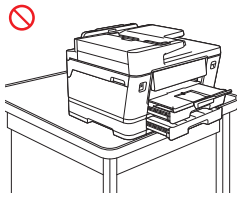
- (Models with the Wireless LAN function only) DO NOT use the product near any medical electrical equipment. The radio waves emitted from the product may affect medical electrical equipment and cause a malfunction, which may result in accident or injury.
- For users with pacemakers: This product generates a weak magnetic field. If you feel anything wrong with the operation of your pacemaker when near the product, move away from the product and consult a doctor immediately.

Plastic bags are used in the packing of this product. Plastic bags are not toys. To avoid the danger of suffocation, keep these bags away from babies and children, and dispose of them correctly.

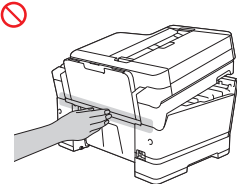
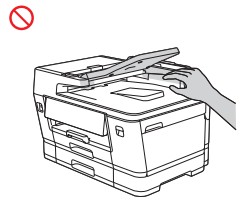
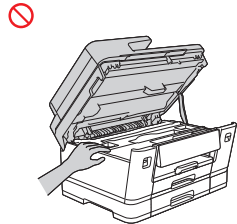
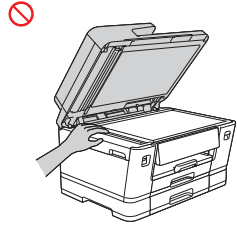
⚠ CAUTION

- Wait until pages have exited the product before picking them up. Failure to do this may cause injury to your fingers by trapping them inside the machine.
- Keep your hands and any objects away from the ink insertion slot.
- If the trays are extended, as shown, position the product so that the tray does not extend past the edge of the surface on which the product sits. If someone hits the tray, the product could fall and cause injury.

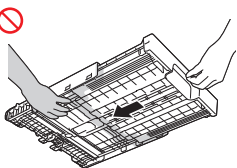
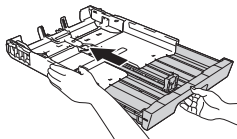




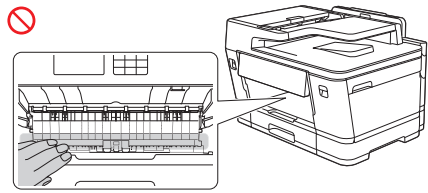
- To prevent injuries, keep your hands away from the areas shown in the illustrations.



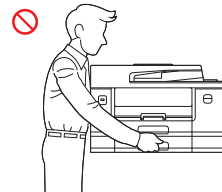
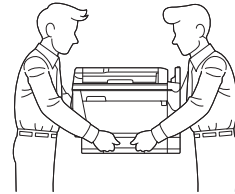
When changing the tray size from the large paper size to the original size, be careful not to trap your fingers in the gaps or slots in the bottom of the tray.



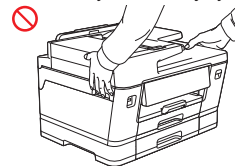
Keep your hands away from the areas shown in the illustration.

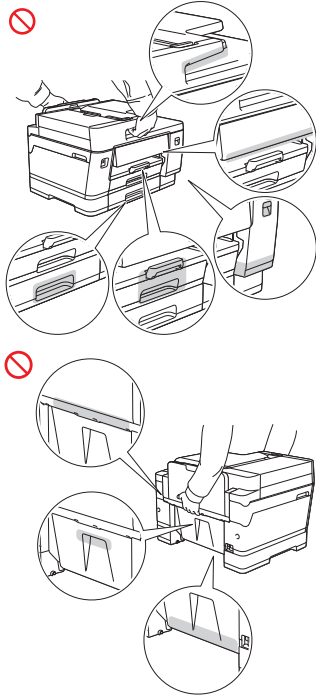


To prevent possible injuries, at least two people should lift the product. One person should stand in front of the product, and another person should stand behind it, as shown in the illustration below. Carry the product by sliding your hands into the handhold indentations located on each side of the product. Be careful not to trap your fingers when you put the product down.

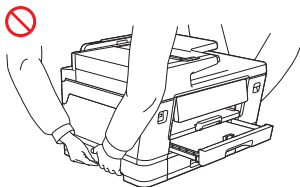
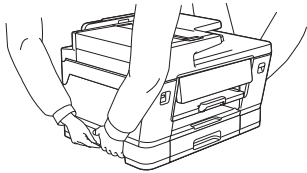


DO NOT carry the product by holding the areas shown in the illustrations. Doing this may cause the product to slip out of your hands and may result in injury.





When carrying the product, remove the trays if they have been extended to hold large paper. The weight of the paper could cause the trays to fall and cause injury to you or others.



When multiple devices, including this product, are connected to a computer using USB cables, you may feel an electric charge when you touch metal parts of the product.

- Be careful not to get the ink in your eyes when replacing ink cartridges.
- Keep ink cartridges out of the reach of children.
- Avoid swallowing ink.
- DO NOT shake ink cartridges unless specifically instructed to do so. Ink may leak if the cartridge is shaken.
- DO NOT dismantle ink cartridges. The ink may get in your eyes, or on your skin.

If the ink contacts your skin or gets into your eyes or mouth, follow these steps immediately:

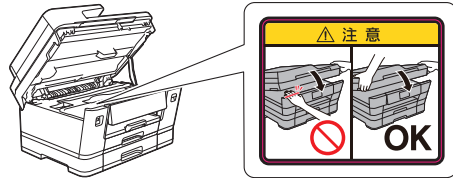
- If your skin comes into contact with the ink, wash your skin with water and soap immediately.
- If the ink gets into your eyes, rinse them with water, and consult your doctor immediately. If left untreated, it may cause redness or mild inflammation of the eyes.

- If the ink gets into your mouth or you swallow it, spit it out, rinse your mouth, and consult your doctor immediately. Failure to seek medical attention could lead to sickness.

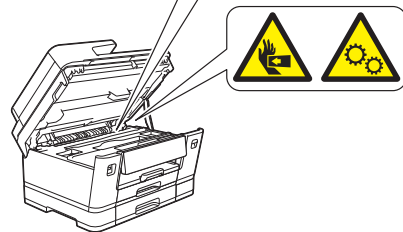
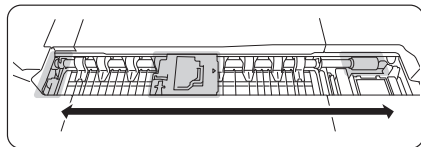
DO NOT run your hand over the edge of the paper. The thin and sharp edges of the paper may cause an injury.

⚠ CAUTION

- DO NOT remove or damage any of the caution or warning labels inside the product.



- Moving parts are located in the grey-shaded areas shown in the illustration. Keep your hands away from those areas when the parts are moving. DO NOT remove or damage any of the caution or warning labels inside the product.



IMPORTANT

- A distinct change in the product's performance may indicate a need for service.
- DO NOT connect your product to an electrical socket controlled by wall switches or automatic timers, or to the same circuit as a large appliance or other equipment that requires a significant amount of electricity. It could disrupt the power supply. Disruption of the power supply may also delete information from the product's memory, and repeated cycling of the power supply can damage the product.
- DO NOT put any objects on top of the product. Doing so may cause the product to malfunction.
- If the product does not operate normally when the operating instructions are followed, adjust only those controls that are covered by the operating instructions. Incorrect adjustment of other controls may result in damage and will often require extensive work by a qualified technician to restore the product to normal operation.

Product Warranty & Liability

Nothing in this guide shall affect any existing product warranty or be construed as granting any additional product warranty. Failure to follow the safety instructions in this guide may invalidate your product's warranty.

⚠ WARNING



- Only use the power cord supplied with this product (if included in the box).
- This product must be installed near an electrical socket that is easily accessible. In case of an

emergency, you must unplug the power cord from the electrical socket to shut off the power completely.

Notes on Using the Wireless Network Models

1. For Wireless LAN Function of the Equipment

2.4 GHz band equipment

- Operating frequency: 2.4 - 2.4835 GHz
- Equivalent isotropic radiated power (EIRP): ≤ 100 mW
- Maximum power spectral density: ≤ 10 dBm / MHz (EIRP)
- Carrier frequency tolerance: 20 ppm
- Out-of-band emission power (Outside the 2.4 to 2.4835 GHz frequency band)
 ≤ -80 dBm / Hz (EIRP)
- Spurious emission (radiation) power (Outside the range of the corresponding carrier ± 2.5 times the channel bandwidth):
 ≤ -36 dBm / 100 kHz (30 - 1000 MHz)
 ≤ -33 dBm / 100 kHz (2.4 - 2.4835 GHz)
 ≤ -40 dBm / 1 MHz (3.4 - 3.53 GHz)
 ≤ -40 dBm / 1 MHz (5.725 - 5.85 GHz)
 ≤ -30 dBm / 1 MHz (1 - 12.75 GHz for others)

5.2 - 5.3 GHz band equipment

- Operating frequency range: 5150 - 5350 MHz
- Equivalent isotropic radiated power (EIRP): ≤ 200 mW
- Maximum power spectral density: ≤ 10 dBm / MHz
- Carrier frequency tolerance: 20 ppm
- Out-of-band emission power (EIRP): ≤ -80 dBm / Hz
- Spurious emission (radiation) power:
 ≤ -36 dBm / 100 kHz (30 - 1000 MHz)
 ≤ -54 dBm / 100 kHz (48.5 - 72.5 MHz, 76 - 118 MHz, 167 - 223 MHz, 470 - 798 MHz)
 ≤ -40 dBm / 1 MHz (2400 - 2483.5 MHz)
 ≤ -33 dBm / 100 kHz (5150 - 5350 MHz)
 ≤ -40 dBm / 1 MHz (5470 - 5850 MHz)
 ≤ -30 dBm / 1 MHz (1 - 40 GHz for others)

5.8 GHz band equipment

- Operating frequency range: 5725 - 5850 MHz
 - Emission power: ≤ 500 mW and ≤ 27 dBm
 - Equivalent isotropic radiated power (EIRP): ≤ 2 W and ≤ 33 dBm
 - Maximum power spectral density: ≤ 13 dBm / MHz and ≤ 19 dBm / MHz (EIRP)
 - Carrier frequency tolerance: 20 ppm
 - Out-of-band emission power (EIRP): ≤ -80 dBm / Hz (≤ 5725 MHz or ≥ 5850 MHz)
 - Spurious emission (radiation) power:
 ≤ -36 dBm / 100 kHz (30 - 1000 MHz)
 ≤ -40 dBm / 1 MHz (2400 - 2483.5 MHz)
 ≤ -40 dBm / 1 MHz (3400 - 3530 MHz)
 ≤ -33 dBm / 100 kHz (5725 - 5850 MHz) (Note: Outside the range of the corresponding carrier 2.5 times the channel bandwidth)
 ≤ -30 dBm / 1 MHz (1 - 40 GHz for others)
2. DO NOT, without appropriate permission, attempt to alter the emission frequency or increase the emission power (including by installing an additional RF power amplifier), or connect any external antenna or use any unspecified transmitting antenna.
 3. This equipment must not cause harmful interference to other radio services. In case such interference occurred, the equipment must be stopped immediately and cannot be used until the appropriate measures are taken to eliminate the harmful interference.
 4. This micro-power wireless equipment must accept any interference caused by the legal operation of other radio services or radiated interference received from the industrial, scientific and medical appliances.
 5. DO NOT use this equipment anywhere near the plane or airport.
 6. The equipment includes the wireless device(s) with following type approval code(s): CMIIT ID:2021AJ6253

LAN Connection (Models with the Wired LAN Function Only)

CAUTION

DO NOT connect this product to a LAN connection that is subject to overvoltages.

Trademarks

Wi-Fi® and Wi-Fi Direct® are registered trademarks of Wi-Fi Alliance®.

Mac is a trademark of Apple Inc., registered in the U.S. and other countries.

Android is a trademark of Google LLC.

QR Code is a registered trademark of DENSO WAVE INCORPORATED in Japan and in other countries.

Each company whose software title is mentioned in this manual has a Software Licence Agreement specific to its proprietary programs.

Any trade names and product names of companies appearing on Brother products, related documents and any other materials are all trademarks or registered trademarks of those respective companies.

Customer Service and Service Centre Locations

Visit support.brother.com for contact information for your local Brother office.

Unlawful Use of Copying or Scanning Equipment (Products with the scanning function only)

It is an offence to make reproductions of certain items or documents with the intent to commit fraud. The following is a non-exhaustive list of documents which it may be unlawful to produce copies of. We suggest you check with your legal adviser and/or the relevant legal authorities if in doubt about a particular item or document:

- Currency
- Bonds or other certificates of debt
- Certificates of deposit
- Armed forces service or draft papers
- Passports
- Postage stamps (cancelled or uncanceled)
- Immigration papers
- Welfare documents
- Cheques or drafts drawn by governmental agencies
- Identifying badges or insignias

In addition, driving licences and/or Certificates of Title to motor vehicles may not be copied or scanned under certain national laws.

Copyrighted works cannot be copied or scanned lawfully, subject to the "fair dealing" exception relating to sections of a copyrighted work. Multiple copies would indicate improper use. Works of art should be considered the equivalent of copyrighted works.

Disclaimer

Brother disclaims any warranties with respect to avoidance, mitigation or non-occurrence of any breakdowns, malfunctions, system crashes, virus infections, damage and disappearances of data, and any other kind of errors by using this product. AS LONG AS PERMITTED BY APPLICABLE LAWS, BROTHER WILL NOT BE LIABLE FOR ANY LOST REVENUES OR INDIRECT, SPECIAL, INCIDENTAL, CONSEQUENTIAL, EXEMPLARY, OR PUNITIVE DAMAGES OF THE CUSTOMERS OR ANY OTHER THIRD PARTY.