

**NOTE:** For successful wireless setup, you will need to have a network cable for a temporary connection to your wireless router or access point, and you must know your network settings.

**STEP I:** Gather the wireless network settings of your wireless access point or wireless router

The network settings information for your network can be found on the network configuration sheet of your wireless access point or wireless router. Please contact the manufacturer of your wireless access point or wireless router or refer to the user's guide for your wireless access point or wireless router for instructions on printing a network configuration sheet. This information includes:

- A. SSID (Service Set ID or Network Name). Your access point or router is identified by an SSID or network name.
- B. Encryption Method required by your access point or router. For example, Open System, Shared Key, WPA-PSK, LEAP, etc.
- C. If you are using WEP, you will need the WEP KEY (in HEX key format). For example, a 64-bit key uses 10 digits of hexadecimal data: i.e. 71f2234aba, while a 128-bit key uses 26 digits of hexadecimal data: i.e. 71f2234ab56cd709e5412aa3ba.
- D. If you are using WPA-PSK (TKIP), you will need the PASSPHRASE. For routers that use a Pre-Shared Key (PSK), the PASSPHRASE is more than 7 characters and less than 64 characters in length.
- E. If you are using MAC (Media Access Control) Filtering/MAC Address Access Control on your router, add the printer's MAC Address to the table. The MAC Address is available on the Wireless Settings Page. Make sure the Node Type is Brother NC-7400w.

**NOTE:** If you do not have this network settings information, or cannot find this information, do not proceed with the wireless setup. Contact the manufacturer of your wireless access point or wireless router for this network information.

**STEP II:** Perform a factory reset on the printer

1. Check that the front cover of the printer is closed. Turn OFF the power switch on the right side of the printer.
2. Hold down the GO button as you turn on the power switch. The GO button is located on the top left side of the printer below the Toner, Drum, and Error LEDs.
3. Keep the GO button pressed down until the Toner, Drum, and Error LEDs light up. Release the GO button. Make sure that all the LEDs turn off.
4. Press the GO button 8 times. The Ready LED (blue light) will flash while the printer is reset. After the printer is reset the Ready LED will be lit.

**STEP III:** Perform a factory reset on the printer network card

1. Turn OFF the power switch on the right side of the printer.
2. Hold down the GO button as you turn on the power switch. The GO button is located on the top left side of the printer below the Toner, Drum, and Error LEDs.
3. Keep the GO button pressed down until the Toner, Drum, and Error LEDs light up. Release the GO button. Make sure that all the LEDs turn off.
4. Press the GO button 7 times with 5 seconds. The network card is now reset.

**STEP IV:** Connect the printer via network cable and configure the wireless settings

1. Connect the Brother printer directly to an available port on the wireless access point, wireless hub, or wireless router using a network cable.
2. Wait 1 minute, and then print out the printer settings pages by pressing the Go button on the printer 3 times. Check the last page. The text to the right of 10/100BASE-TX in the Node Type section will indicate that the wired network card is active or inactive (Figure 1). Locate the printer IP address (Figure 2). Make sure that the IP address of the printer is in the same range (on the same network) as the IP address of the computer.

**PRINTER SETTINGS(3/3)**

```
HL-2170W series SER.NO#K7J130535

<<NETWORK CONFIGURATION>>
<Node Type> Brother NC-6600h, Ethernet 10/100BASE-TX (Active)
<Node Firmware Ver.> Firmware Ver.1.03 (07.08.31)
<Ethernet Address> 00-80-77-c7-ee-a3
<Node name> BRN008077C7EEA3

<Active services> BRN008077C7EEA3
                  BINARY_P1
                  TEXT_P1
                  POSTSCRIPT_P1
                  PCL_P1
                  BRN008077C7EEA3_AT

<Protocols>
TCP/IP          Enabled IPv6          Disabled
NetBIOS/IP     Enabled APiPA        Enabled
LegacyAuth     Enabled WebBasedManagement Enabled
TELNET         Enabled SMSG         Enabled
LFD            Enabled Raw Port     Enabled
IPP            Enabled WebServices  Enabled
POP3/SNTP      Enabled FTP         Enabled
TFTP          Enabled mDNS        Enabled
LLMNR         Enabled LLTD        Disabled

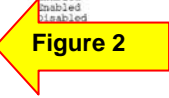
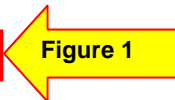
<IP Settings>
IP Address      205.134.46.66 (via DHCP)
Subnet Mask    255.255.255.0
IP Gateway     205.134.46.254
IP Config      AUTO
Boot Trains    3
IP Filter      Disabled

GW Timeout (sec) 5
DNS Address Config AUTO
Primary DNS Server 205.134.46.230
Secondary DNS Server 205.134.32.133

<NetBIOS Name> BRN008077C7EEA3
<WINS Address Config> AUTO
<Primary WINS Server> 205.134.46.230
<Secondary WINS Server> 205.134.32.132

<Printer Mail Address> brn008077c7eeas@example.com
<SMTP Server> 0.0.0.0
<SMTP Ports> 25
<POP3 Server> 0.0.0.0
<POP3 Port> 110

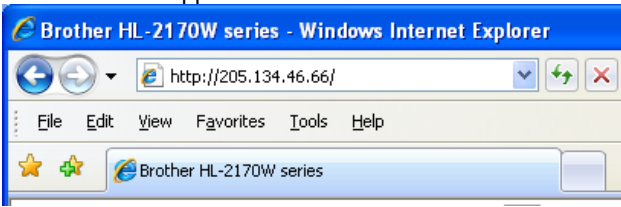
<mDNS Service Name> Brother HL-2170W series
<WebServices Name> Brother HL-2170W series [008077c7eeas]
<Ethernet Link Mode> Auto
<Ethernet Link Status> Link OK, 100baseTX FDX #Link drops=0
```



**Configure the Wireless Network Card**

1. If the IP Address of the computer and the IP Address of the printer are in the same range, open a web browser.

2. Enter the IP Address of the printer into the web browser screen and press ENTER. The Brother Web Management screen will appear.



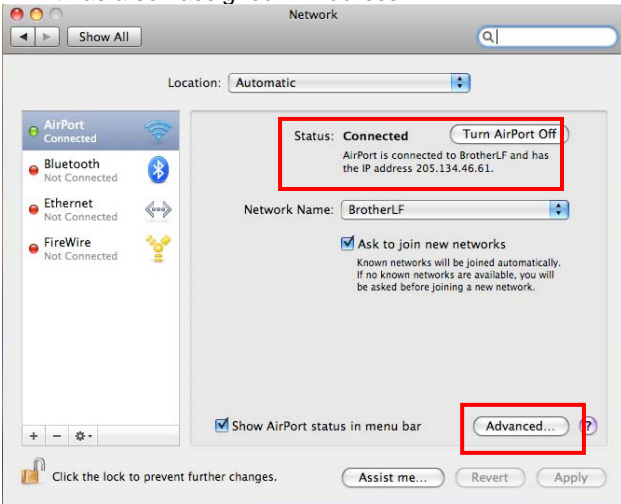
**NOTE:** If the Brother Web Management screen doesn't appear, verify your Mac is configured with the same network information as the printer. To determine the computer's IP address:

**Mac OS 10.5**

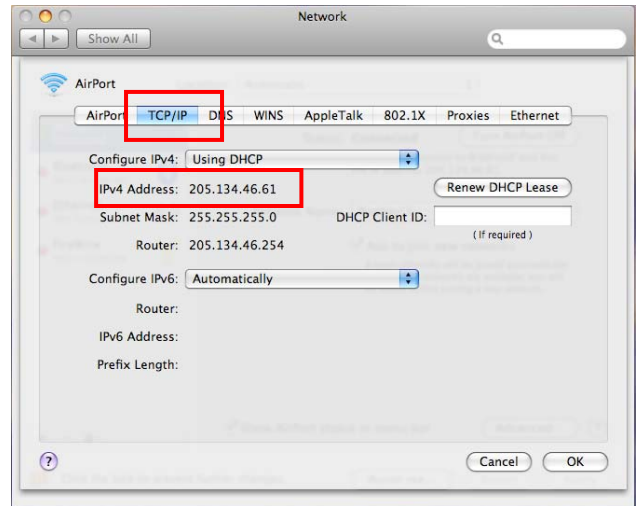
- a. Select System Preferences from under the blue Apple in the top left corner.
- b. Select Network.



- c. Click on Advanced. The Airport connection will indicate that it has a self-assigned IP Address.



- d. Click on the TCP/IP tab. Locate the IP Address. This number should be similar to the IP Address of the printer. The printer's IP Address can be found on the Printer Settings pages you printed out previously. The first two sets of numbers should be the same. For example:  
 Computer IP Address is: 205.134.x.x  
 Printer IP Address is: 205.134.x.x

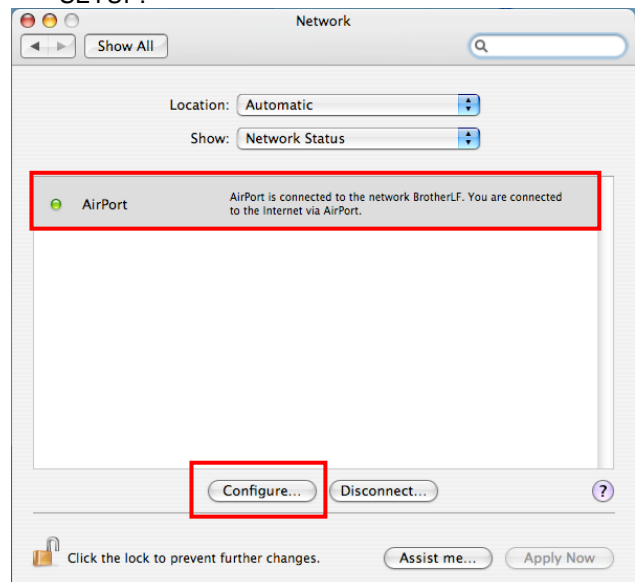


**Mac OS 10.4**

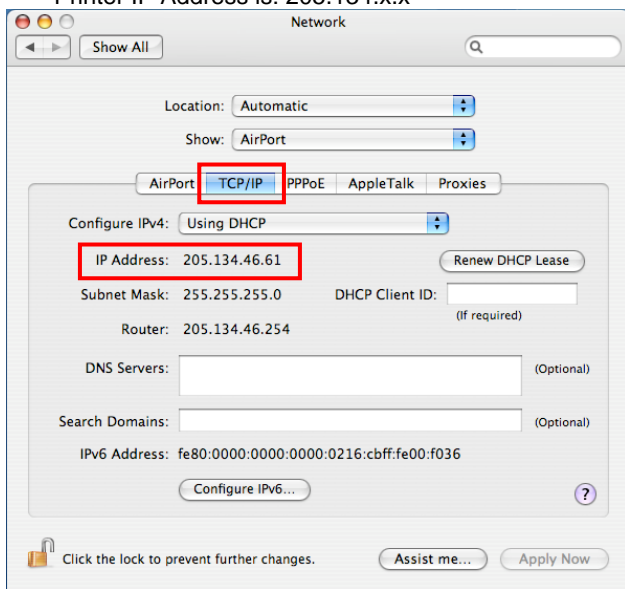
- a. Select System Preferences from under the blue Apple in the top left corner.
- b. Select Network.



- c. Click on Configure. The Airport connection will indicate that it is connected to the Computer-to-Computer network SETUP.

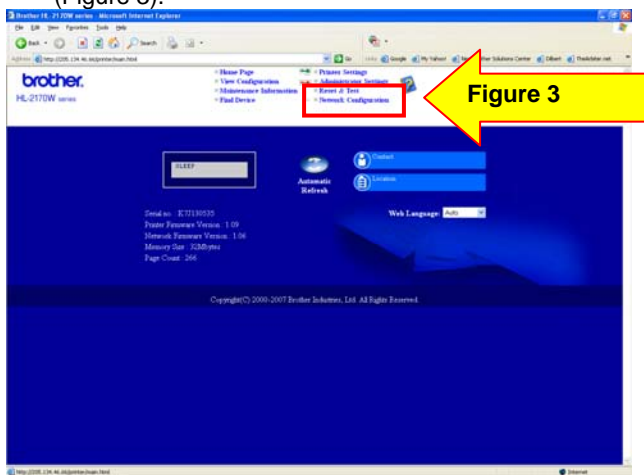


- d. Click on the TCP/IP tab. Locate the IP Address line. This number should be similar to the IP Address of the printer. The printer's IP Address can be found on the Settings Pages you printed out previously. The first two sets of numbers should be the same. For example:  
 Computer IP Address is: 205.134.x.x  
 Printer IP Address is: 205.134.x.x



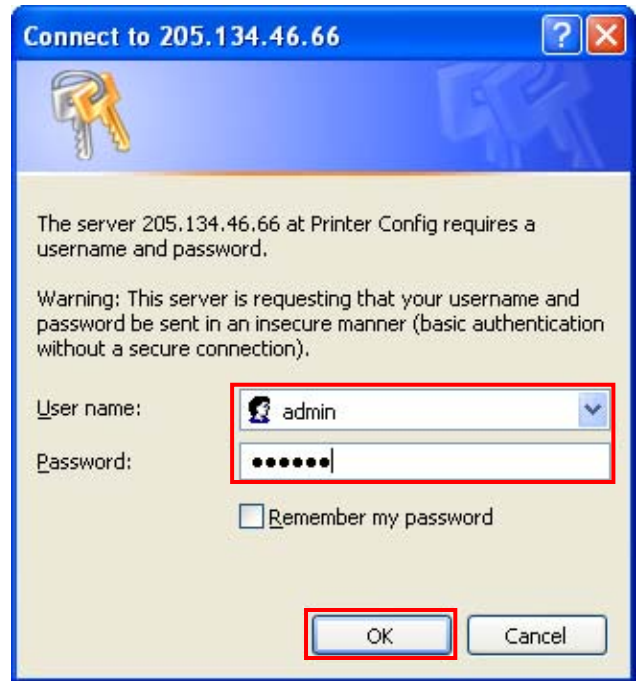
**NOTE:** If these numbers are not similar (not in the same range), return to STEP III to perform a factory reset on the printer network card. After the network card is reset, wait one minute, and then press the GO button 3 times to print the settings pages. Review the last page for the printer IP address again. If the printer IP address is not similar to the computer IP address, DO NOT proceed with wireless setup. Please go to STEP III and reset the network card again.

3. Click on Network Configuration near the top of the screen. (Figure 3).

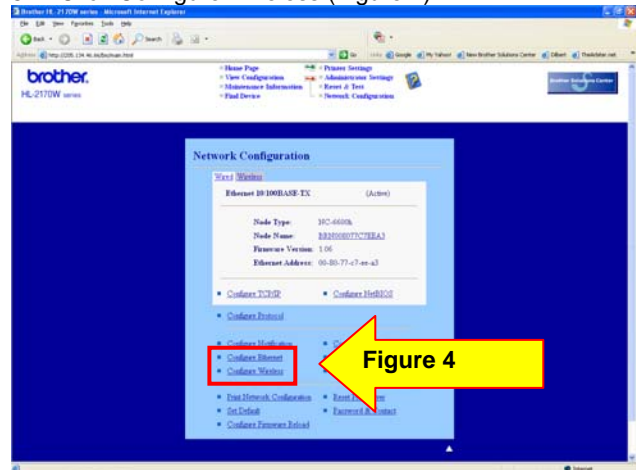


4. A login screen will appear. Enter the following:  
 Username: admin.  
 Password: access.

Then Click OK.

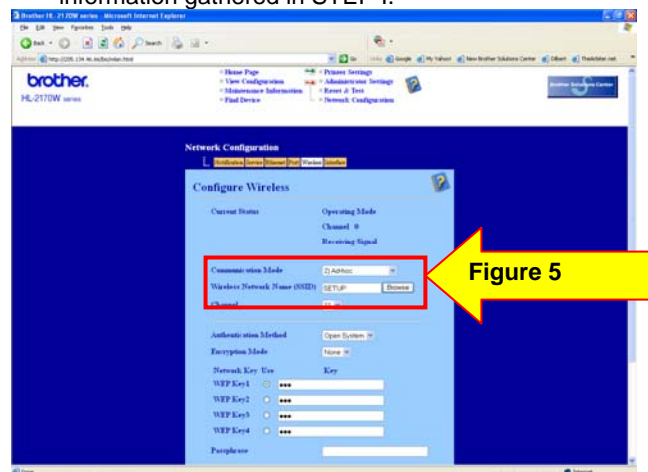


5. Click Configure Wireless (Figure 4).

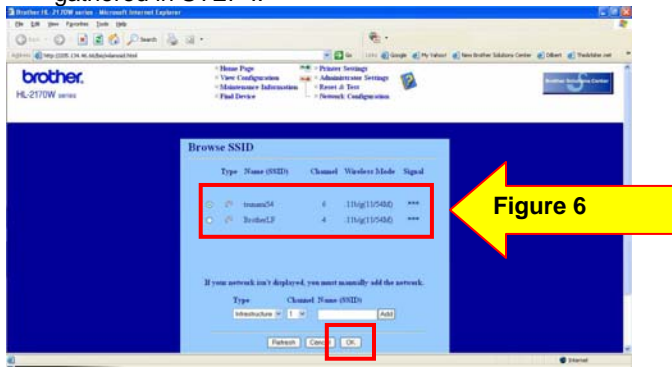


6. Change the Communication Mode to Infrastructure (Figure 5).

7. Click BROWSE next to the Wireless Network Name (SSID) (Figure 5). For the SSID, refer to the network settings information gathered in STEP I.

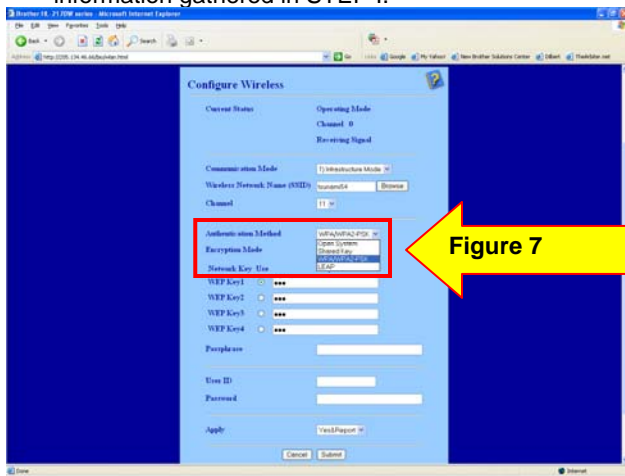


- Select the appropriate Name (SSID) from the list and click OK (Figure 6). Refer to the network settings information gathered in STEP I.

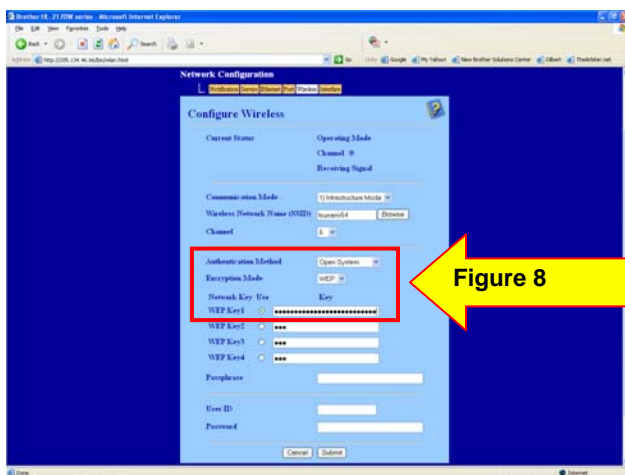


- Leave the Channel setting as is.

- Select the appropriate Authentication Method from the drop down list (Figure 7). Refer to the network settings information gathered in STEP I.



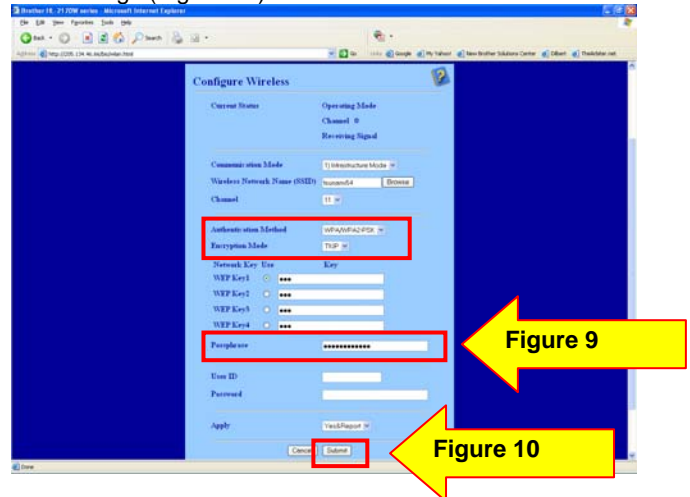
- Select the appropriate Encryption Method (Figure 8). Refer to the network settings information gathered in STEP I.



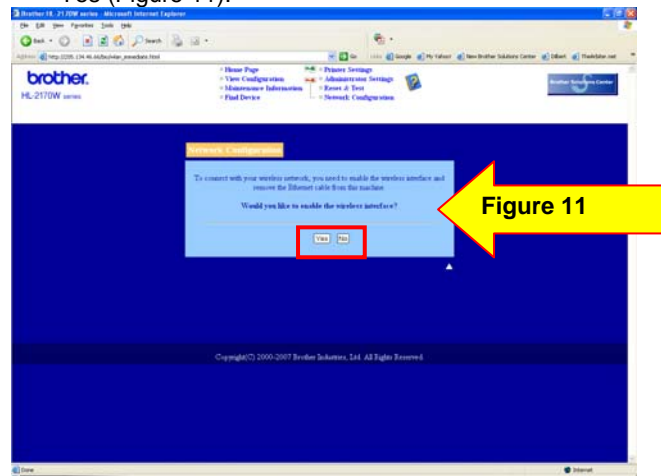
**NOTE:** If WEP is selected as the Encryption Method, enter the hex code for the WEP Key 1. There is no need to enter the Passphrase for WEP Encryption.

**NOTE:** If an Authentication Method other than Open or Shared is selected, then a Passphrase must be entered on the Passphrase line (Figure 9).

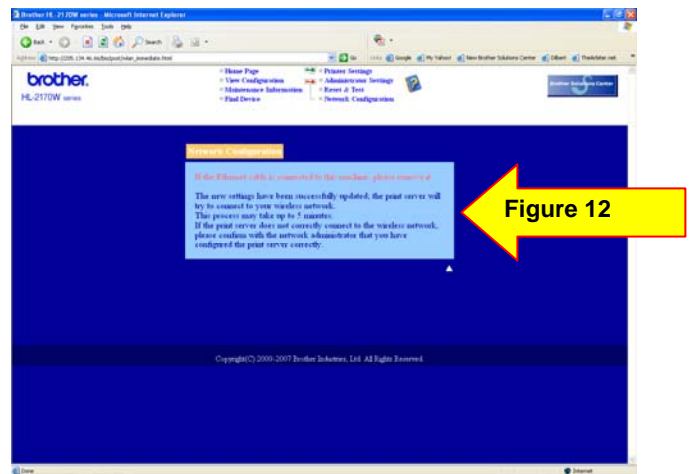
- Click Submit to update the printer with your wireless settings (Figure 10).



- You will be prompted to enable the wireless interface. Click Yes (Figure 11).



- The computer should display a screen indicating the settings have been updated successfully and a reminder to disconnect the network cable from the back of the printer (Figure 12). Disconnect the network cable from the printer.



**NOTE:** 2 pages will print out. The second page is the wireless settings page. The Node Type will display the network card as inactive if the network cable is still connected. Once you disconnect the cable, the Wireless interface will become active.

**NOTE:** The IP Address will be 0.0.0.0. This is expected. Continue with the next step.

15. The Wireless Network Card on the printer is now Active on the network.
16. Verify the printer is now attached to the wireless access point or wireless router.
  - a. Wait approximately one minute.
  - b. Press the GO button 3 times to print the settings pages.

**NOTE:** 4 Pages should print out. If only 3 pages print out, verify on the last page the Node Type. If the Node Type is NOT the NC-7400W, the wireless interface is not enabled. To enable the wireless interface, press and hold down the GO button until a page prints out. It should take about 20 seconds.

- c. Look at the last page printed out. Confirm that the IP address on that page is assigned via DHCP (Figure 13).
- d. Confirm the Comm. Mode is set to Infrastructure, the Name (SSID) matches your access point or router and the Wireless Link Status is Link OK (Figure 14).

### PRINTER SETTINGS(4/4)

```

HL-2170W series          SER.NO:K7J130595

<<NETWORK CONFIGURATION>>
<Node Type>             Brother NC-7400w, IEEE 802.11b/g (Active)
<Ethernet Address>      00-10-26-00-aa-18
<Node name>             BRN001C26D0EA18
<Active services>      BRN008077C7EEA3
                        BINARY_P1
                        TEXT_P1
                        POSTSCRIPT_P1
                        FCL_P1
                        BRN008077C7EEA3_AT

<Protocols>
TCP/IP                  Enabled          IPv6              Disabled
NetBIOS/IP             Enabled          APIPA             Enabled
LegacyAuth             Enabled          WebBasedManagement Enabled
TELNET                 Enabled          SNMP              Enabled
LPD                     Enabled          Raw Port          Enabled
IPP                     Enabled          WebServices       Enabled
POP3/SMTP              Enabled          FTP                Enabled
TFTP                   Enabled          NDKS              Enabled
LLMNR                  Enabled          LLTD              Disabled

<IP Settings>
IP Address              205.134.46.74    (via DHCP)
Subnet Mask             255.255.255.0

IP Config              AUTO
Boot Trise             3
IP Filter              Disabled

GW Timeout (sec)      5
DNS Address Config     AUTO
Primary DNS Server     205.134.46.230
Secondary DNS Server   205.134.32.133

<NetBIOS Name Config> BRN001C26D0EA18
<Primary WINS Server> 205.134.46.230
<Secondary WINS Server> 205.134.32.132

<Printer Mail Address> brn008077c7eea3@example.com
<SMTP Server>          0.0.0.0
<SMTP Port>           25
<POP3 Server>          0.0.0.0
<POP3 Port>           110

<DNS Service Name>    Brother HL-2170W series
<WebServices Name>    Brother HL-2170W series [001c26d0ea18]

<Comm. Mode>          Infrastructure
<Name (SSID)>         BrotherL2
<Authentication Mode> WPA/WPA2-PSK
<Encryption Mode>    TKIP
<Wireless Link Status> Link OK, 11g(54Mbps), Receiving S
<Tx Power Code>       Full, 1, 0

<Network Statistics>
Packets Received       8566
Bytes Received         729133
Packets Transmitted    499
Bytes Transmitted      163114

<Wireless Statistics>
RX Frames Received OK  8571
RX Frames Error        0
TX Frames Transmitted OK 525
TX Frames Error        0
  
```

**Figure 13**

**Figure 14**

**NOTE:** If the IP Address is still 0.0.0.0, wait another minute and print out the settings pages again. If the IP Address is still 0.0.0.0, please reset the router by powering it off, then back on. Also, turn the printer off, then back on. Wait approximately one minute. Print out the Network Settings page again and verify the settings. If the IP Address is still a 0.0.0.0 number, please verify your security information in STEP I is correct and start again from STEP III.

If the IP Address is a 169.254.x.x number and the Wireless Link Status in LINK OK, please check your router for MAC filtering. If

MAC filtering is enabled, please enter the MAC address to the list. If MAC filtering is not enable, please reset the router by powering it off, then back on. Also, turn the printer off, then back on. Wait approximately one minute. Print out the Network Settings page again and verify the settings. If the IP Address is still a 169.254.x.x number, please verify your security information in STEP I is correct and start again from STEP III.

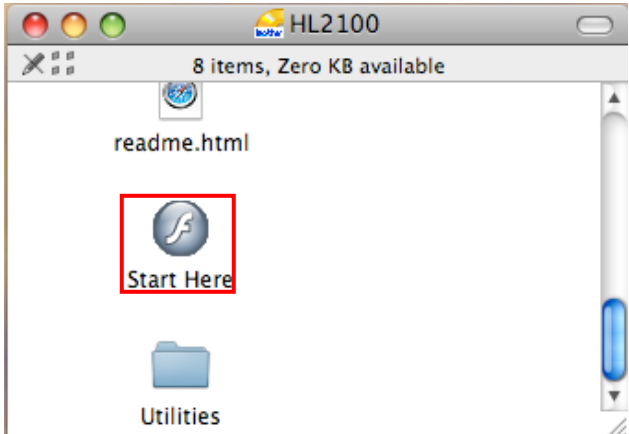
If the IP Address is a 169.254.x.x number and the Wireless Link Status in FAILED TO ASSOCIATE, please reset the router by powering it off, then back on. Also, turn the printer off, then back on. Print out the Network Settings page again and verify the settings. If the IP Address is still a 169.254.x.x number, please verify your security information in STEP I is correct and start again from STEP III.

The printer is now configured and is operating on your network.

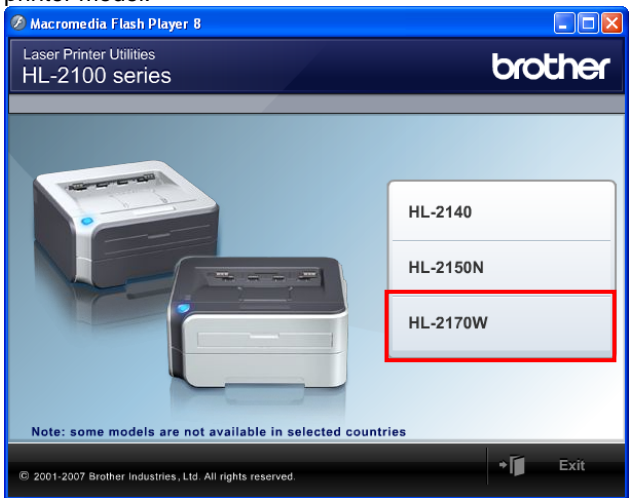
**If you have Brother software CD, proceed to STEP V. If you do not have the CD, proceed to STEP VI.**

### STEP V: Install the printer driver from the CD

1. Insert the Brother software CD into the CD-ROM drive. Double click the HL2100 CD icon on the desktop. Double click on Start Here.



The opening screen will appear automatically. Choose your printer model.



2. Select your language (English).



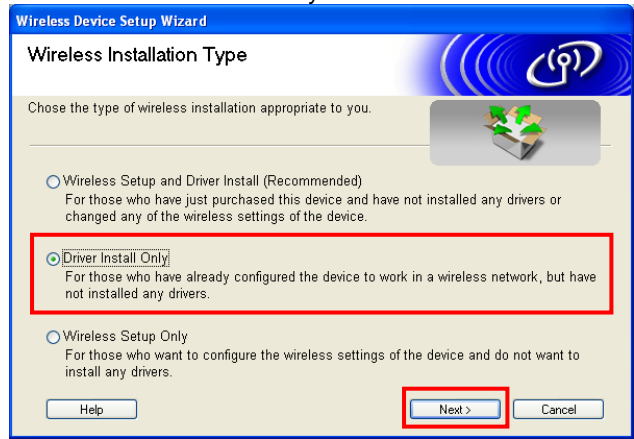
3. Click Install Printer Driver (for USA/Canada/Latin America).



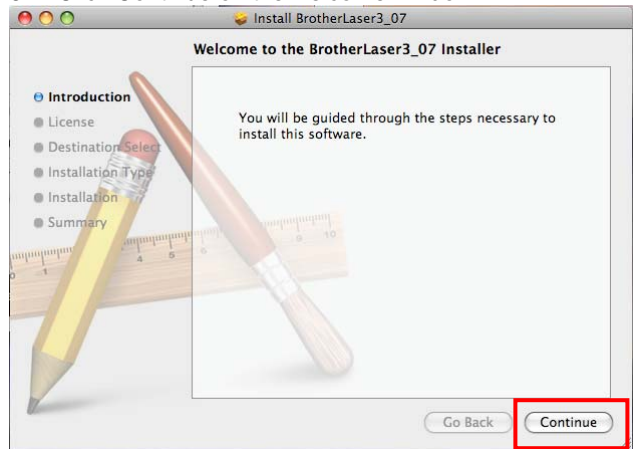
4. Click Wireless Network Users.



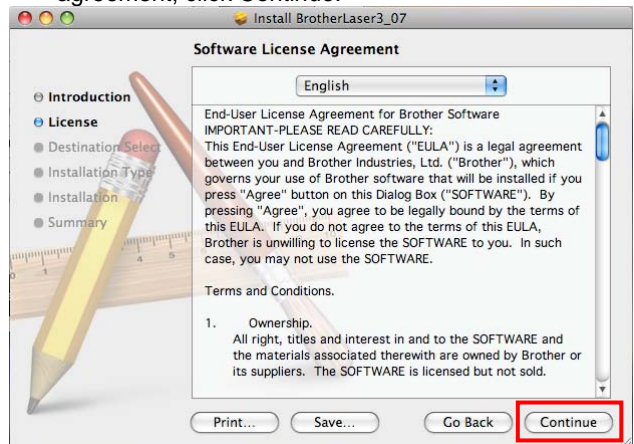
5. Select Driver Install Only and click Next.



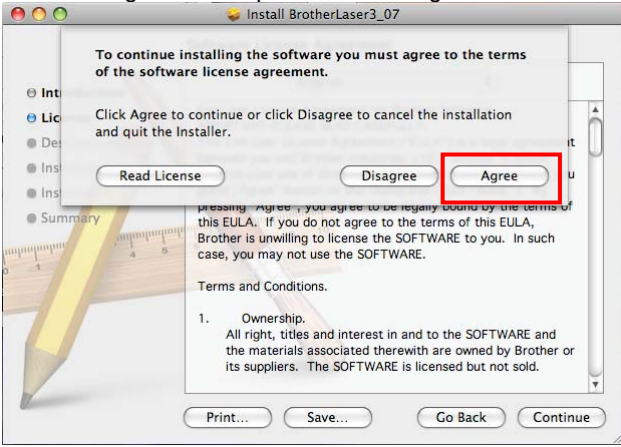
6. Click Continue on the welcome window.



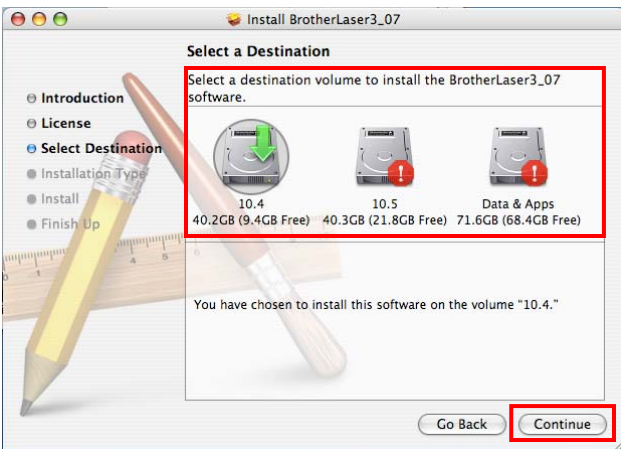
7. Read the license agreement. If you accept the license agreement, click Continue.



8. Click Agree to accept the License Agreement.

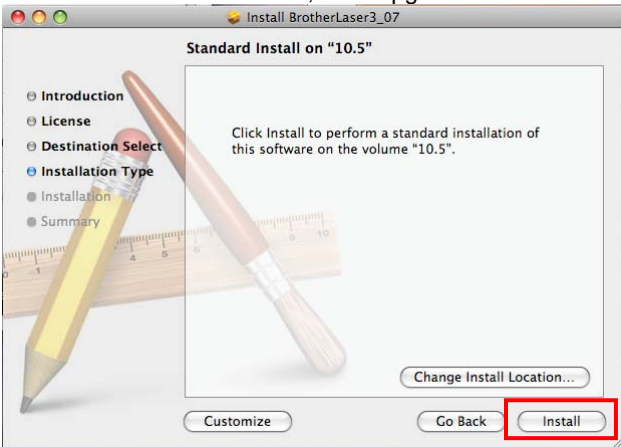


**NOTE:** In Mac OS® X 10.4.x: Select the destination volume to install the driver.



9. Click Install to continue with the standard installation.

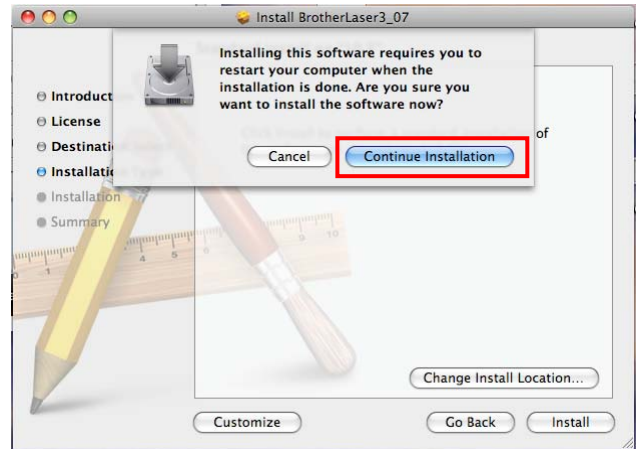
**NOTE:** In Mac OS® X 10.4.x, click Upgrade.



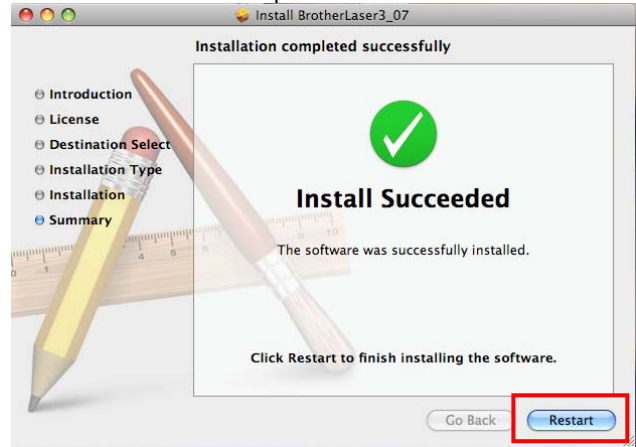
10. You will be prompted to enter your password. Enter your Macintosh password and click OK.



11. You will be informed that the computer will need to restart once the installation has completed. Click Continue Installation.



12. You will receive a message that the install has succeeded. Click Restart to complete the installation.

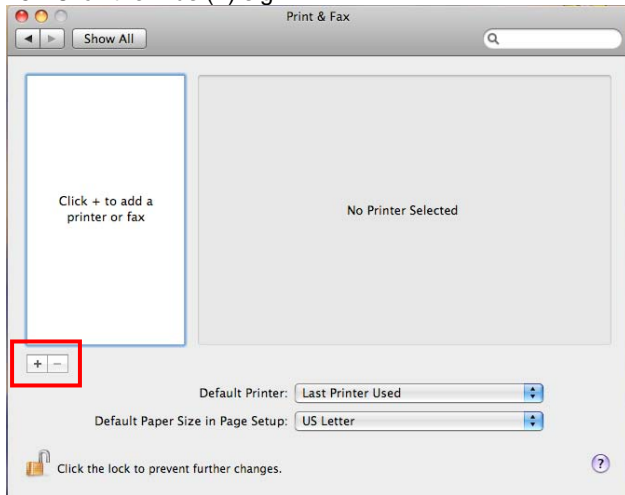


13. Once the computer is restarted, a window appears informing Setup is now complete. Click OK.

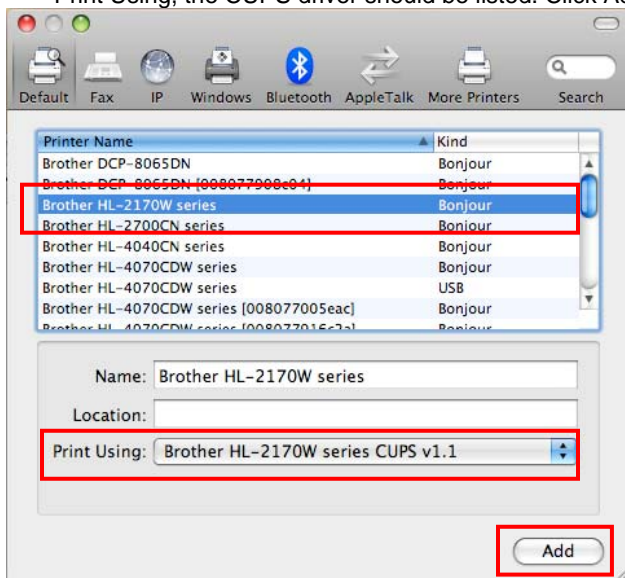
14. You will need to add the printer. Click the Blue Apple icon and select System Preferences and select Print & Fax.



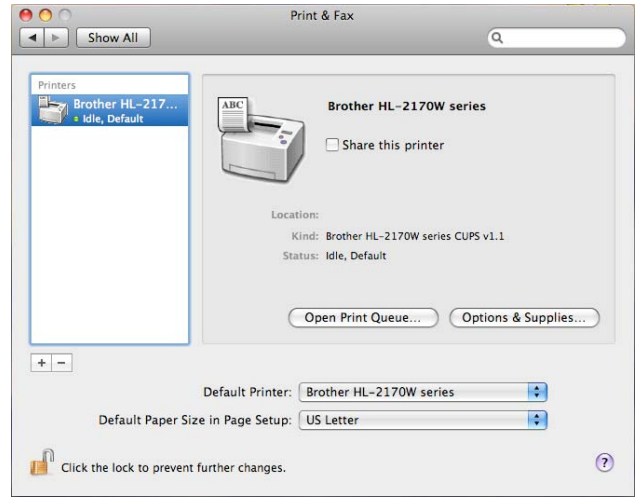
15. Click the Plus (+) sign.



16. In Default view, select Brother HL-2170W series. Next to Print Using, the CUPS driver should be listed. Click Add.



17. The Brother HL2170W series printer icon now appears in the Print & Fax window.



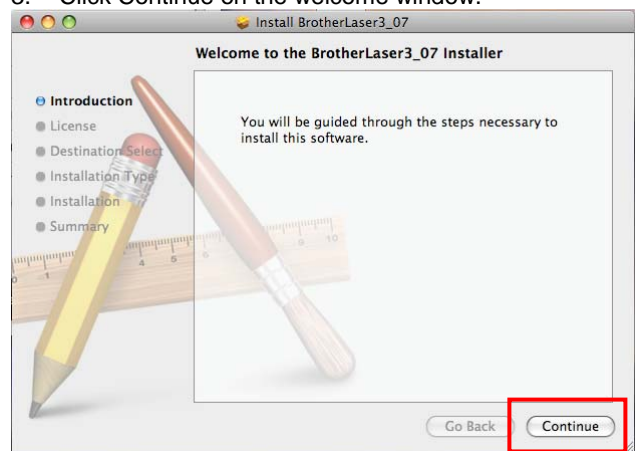
**Setup is now complete.** You do not need to perform STEP VI. If you wish to install the printer driver on a different computer, please follow these printer driver installation steps again (STEP V).

**STEP VI: Install the printer driver From the Web**

The printer driver is available for free download from the Brother web site.

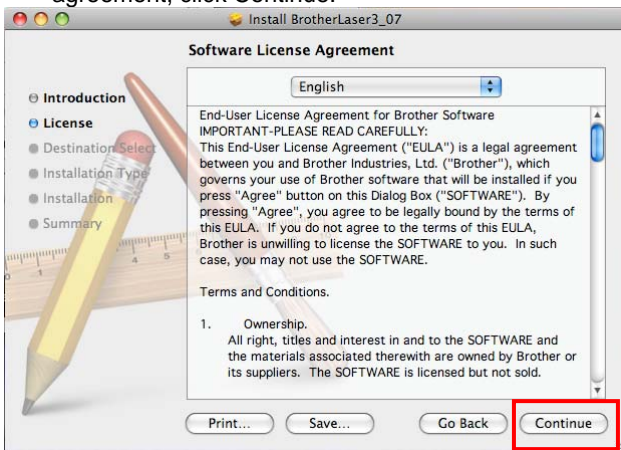
How to install the downloaded driver:

1. Download and save the Macintosh printer driver to your desktop.
2. Once downloading is complete, you may need to double-click the file on the desktop.
3. Click Continue on the welcome window.

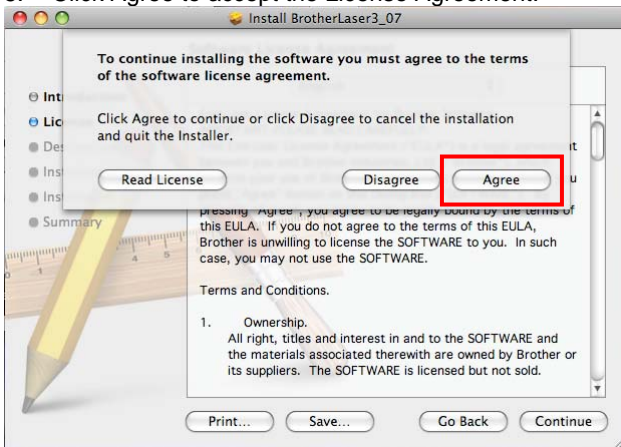




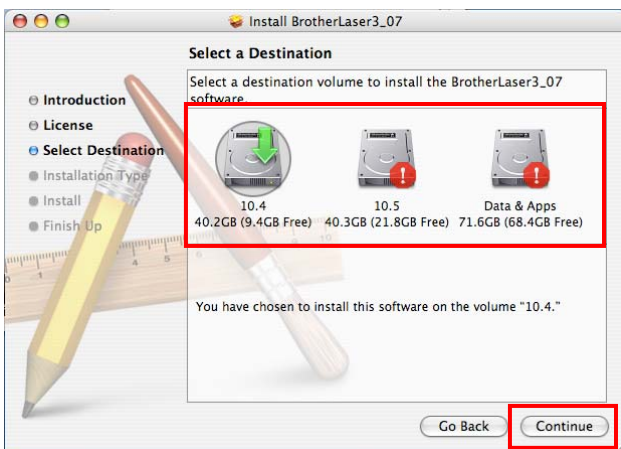
4. Read the license agreement. If you accept the license agreement, click Continue.



5. Click Agree to accept the License Agreement.

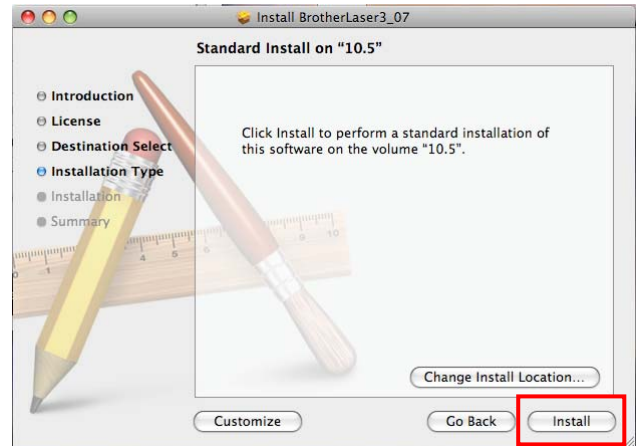


**NOTE:** In Mac OS® X 10.4.x: Select the destination volume to install the driver.

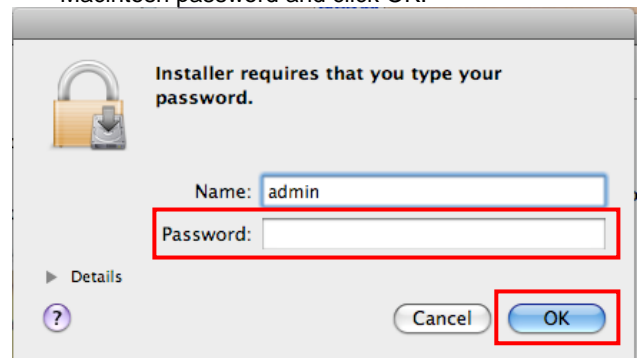


6. Click Install to continue with the standard installation.

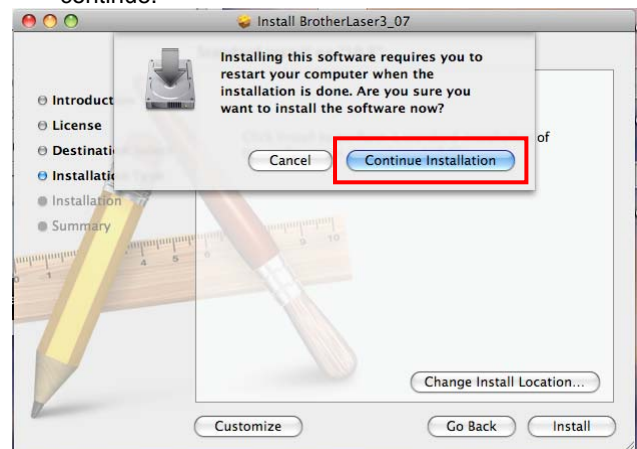
**NOTE:** In Mac OS® X 10.4.x, click Upgrade.



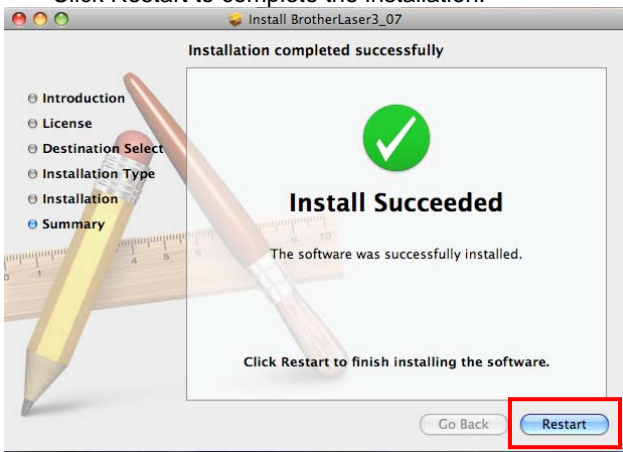
7. You will be prompted to enter your password. Enter your Macintosh password and click OK.



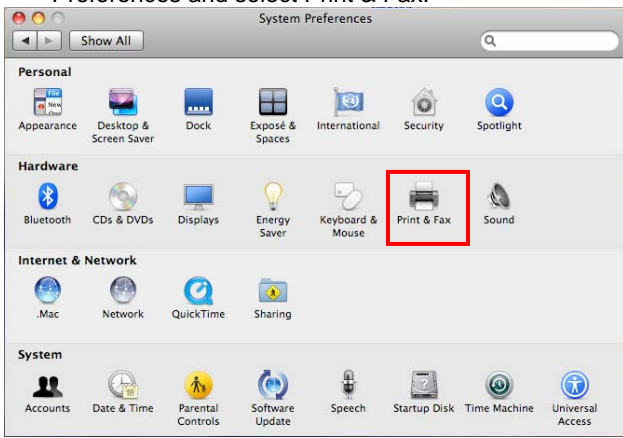
8. You will be informed that the Mac will need to restart once the installation has completed. Click Continue Installation to continue.



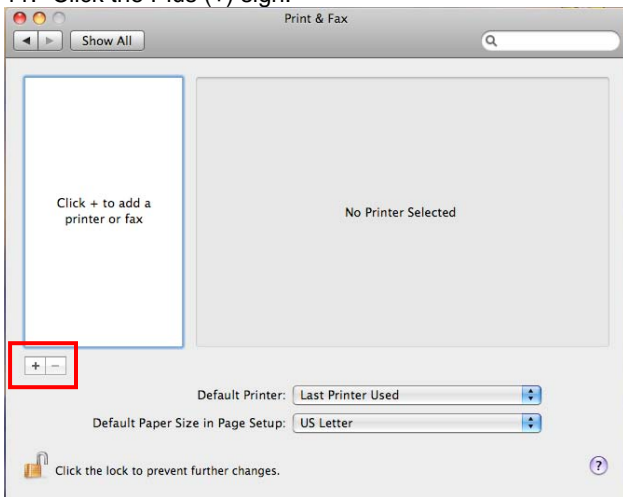
9. You will receive a message that the install has succeeded. Click Restart to complete the installation.



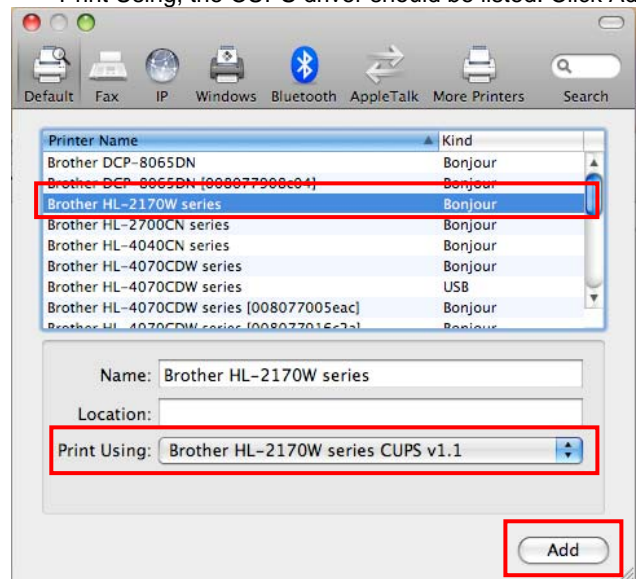
10. Once the computer is restarted, you will need to add the printer. Click the Blue Apple icon and select System Preferences and select Print & Fax.



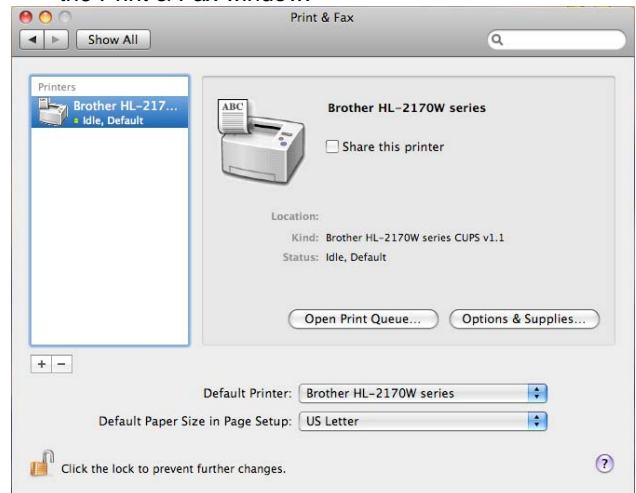
11. Click the Plus (+) sign.



12. In Default view, select Brother HL-2170W series. Next to Print Using, the CUPS driver should be listed. Click Add.



13. The Brother HL2170W series printer icon now appears in the Print & Fax window.



**Setup is now complete.**

If you wish to install the printer driver on a different computer, please follow these printer driver installation steps again (STEP VII).